

Continuing Education for Trustees

The Idaho Commission for Libraries supports educational resources for members of Idaho public library boards. In addition to free face to face and online training resources, there are grants for leadership development and board training funded by the Library Services and Technology Act through the Institute of Museum and Library Services.

How To Get Started

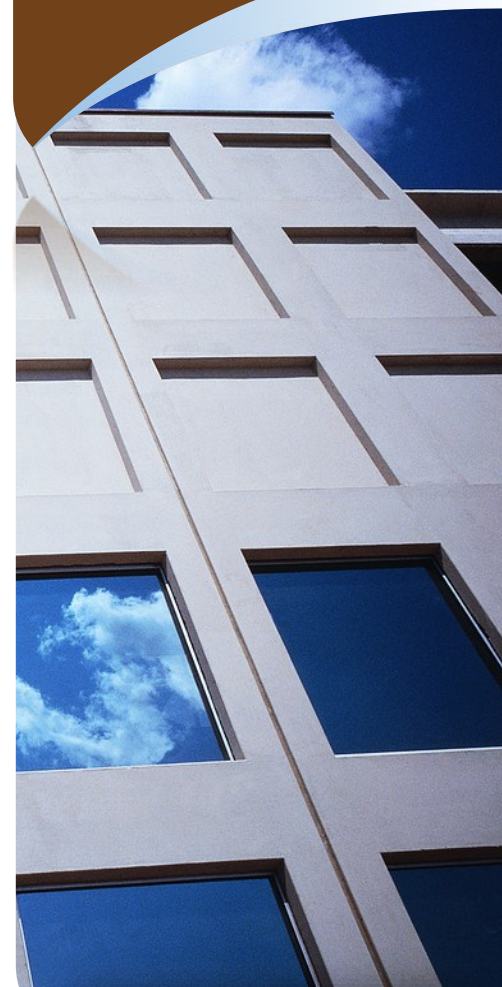
1. Review the application materials at libraries.idaho.gov/Ista.
2. Contact Shirley Biladeau to confirm the conference or learning activity qualifies and to clarify the application process.
3. Applications are due 50 calendar days before the CE event.
4. One grant is allowed per individual, per state fiscal year.

Made possible with funds from the Library Services and Technology Act through the Institute of Museum and Library Services (IMLS).



Shirley Biladeau, Continuing Education Consultant
325 West State Street, Boise, Idaho 83702
Phone: 208-334-2150
Fax: 208-334-4016
E-mail: shirley.biladeau@libraries.idaho.gov

Continuing Education Grants for Idaho Public Library Trustees



→ **Continuing Education Grants**

Through continuing education opportunities, the Idaho Commission for Libraries (ICfL) assists Idaho publicly-funded libraries in building capacity to better serve their clientele.

Idaho libraries may apply for grants to support the skill development of public library board members. These grants are funded by the Library Services and Technology Act through the Institute of Museum and Library Services.

Conference Grant

Supports first-time attendance at a major state, regional, or national library conference held outside a 50-mile radius of their library locale.

Pre-Approved Library Events List at
<http://libraries.idaho.gov/lsta>

Group Grant

Supports the professional development needs of large group CE activities (that may include trustees). Partnership among libraries is encouraged; 25% local match required.

→ **How to Qualify**

Idaho public libraries may apply for grants to support individual or group continuing education (CE) activities throughout the year. Activities must support one of ICfL's strategic issues for library development: Access, Literacy, or Community Anchor.

To determine whether the activity and/or your library is eligible to apply for a CE grant, check out page 4 of the CE Grant Guide found at

<http://libraries.idaho.gov/lsta>

What's New

There are new criteria for individuals and libraries who wish to apply for a continuing education grant.

- One 1st-Time Conference Attendee grant per individual per fiscal year.
- Applications must be submitted 50 days in advance of the event.

Check out the details at:

<http://libraries.idaho.gov/blogs/icfl-continuing-education-grants-whats-new>

→ **Events to Consider Attending**

American Association of School Librarians

<http://www.ala.org/aasl/conferences/national>

American Library Association

<http://www.ala.org/conferences/events>

Association of College and Research Libraries

<http://www.ala.org/acrl/conferences>

Association of Library Services to Children

<http://www.ala.org/alsc/institute>

Association of Rural and Small Libraries

<http://arsl.info/>

Idaho Library Association

<http://www.idaholibraries.org/conferences>

Internet Librarian

<http://www.infotoday.com>

Pacific Northwest Library Association

<http://www.pnla.org>

Public Library Association

<http://www.ala.org/pla/education>

*More information can be found at
<http://libraries.idaho.gov/lsta>*