

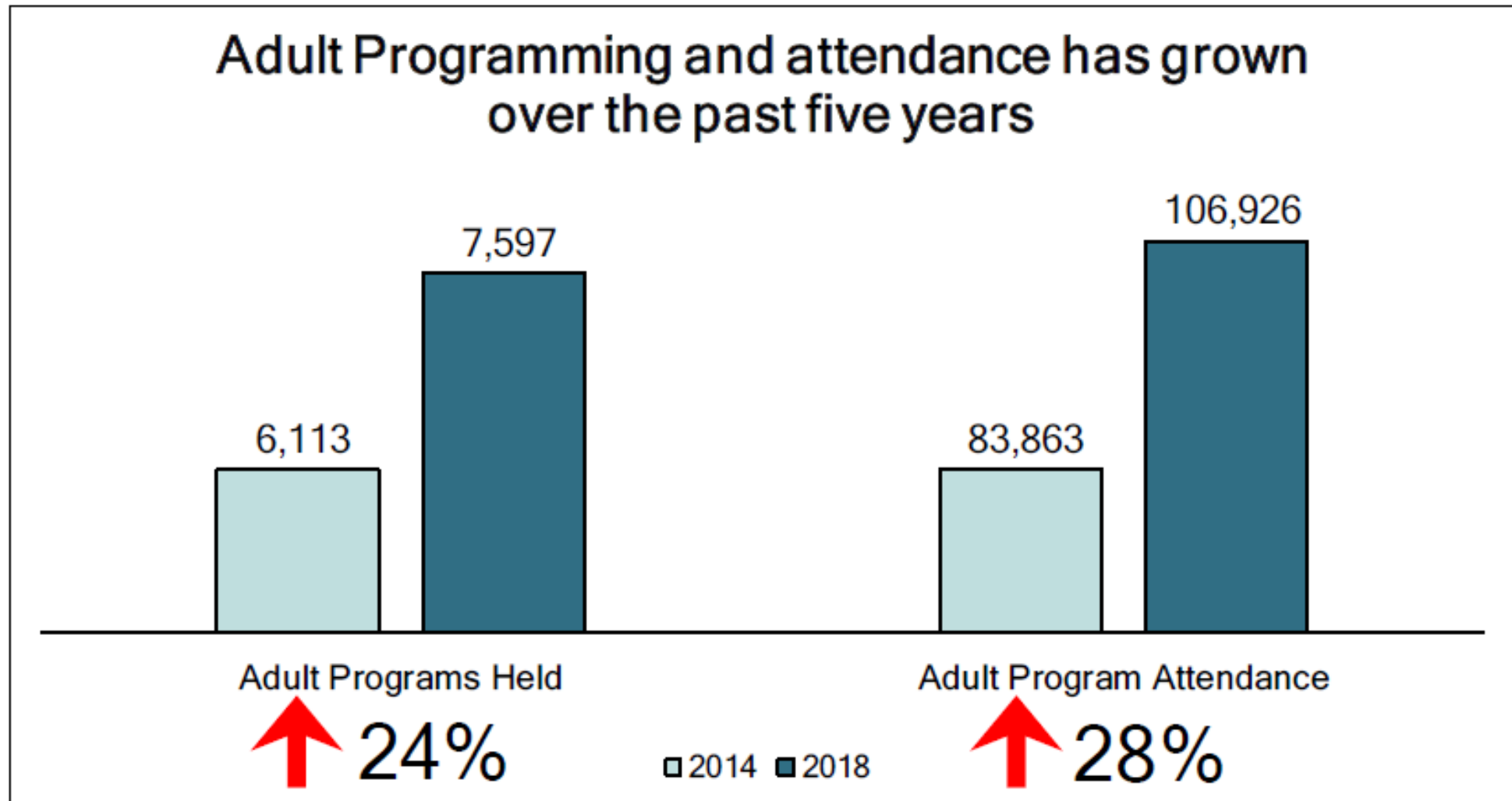
# Adult Services Across Idaho

*Learning from other libraries and connecting with community partners*

Idaho Library Association Annual Conference 2019



# Some context





# Community Partner Presentations



Cathy McDougall  
cmcdougall@aarp.org  
[www.aarp.org](http://www.aarp.org)

# Organization overview

- Advocacy, information and service for those age 50+
- 250 South 5th Street, Boise, ID 83702
- Statewide
- Staff and volunteers are available to travel to events YES
- Movies for Grownups, Fraud Prevention, Financial Security, Caregiving
- We sponsor events





# Idaho Department of Labor

Laurel McMahan, [laurel.mcmahan@labor.idaho.gov](mailto:laurel.mcmahan@labor.idaho.gov)

[Labor.idaho.gov](http://Labor.idaho.gov)

# Change in Service Delivery and Locations

- 14 small offices now provide mobile services in the communities in an around where the offices were located (over 40 locations total throughout the state)
  - Mobile staff are providing services in partner locations, many of which are libraries
- 6 Comprehensive One-Stop Centers in: Post Falls, Lewiston, Caldwell, Twin Falls, Pocatello, Idaho Falls
- 5 Affiliate One-Stop Centers in: Sandpoint, Orofino, Boise, Burley, Salmon



# Organization overview-Services

- Topics your organization addresses
  - Job search and job preparation assistance
  - Workforce training
  - Assistance with filing for unemployment insurance benefits
  - Employer services such as job listings, recruitment assistance and labor market information
- Staff are sometimes available to travel to events





# National Network of Libraries of Medicine Pacific Northwest Region [NNLM PNR]

Michele Spatz, M.S.  
Email: [mspatz@uw.edu](mailto:mspatz@uw.edu)  
<http://nnlm.gov/pnr>

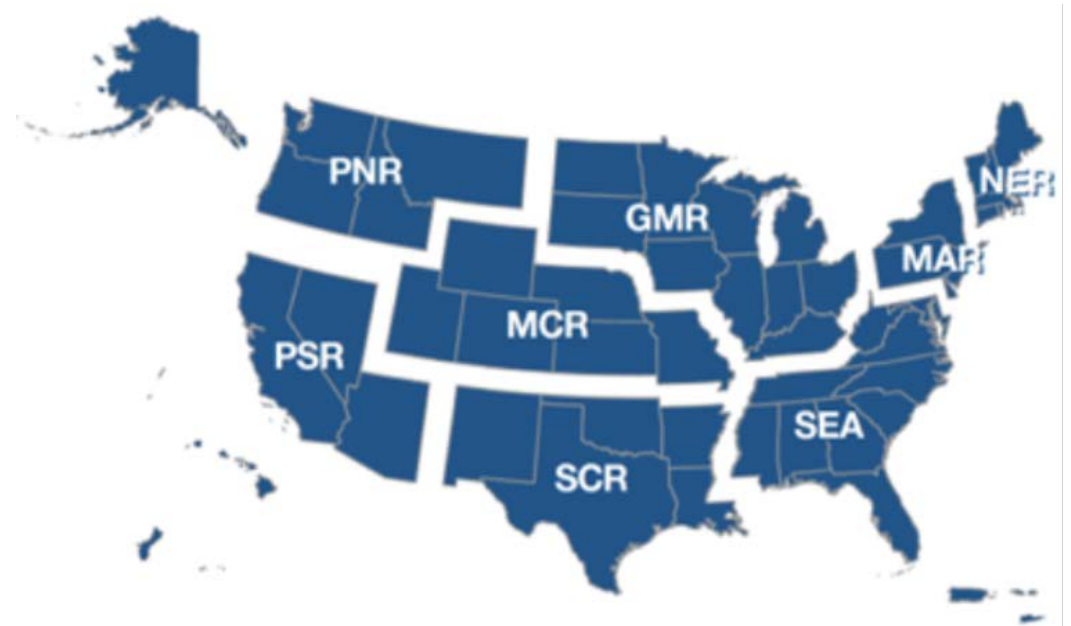


**U.S. National Library of Medicine**

*National Network of Libraries of Medicine  
Pacific Northwest Region*



# About NNLM PNR

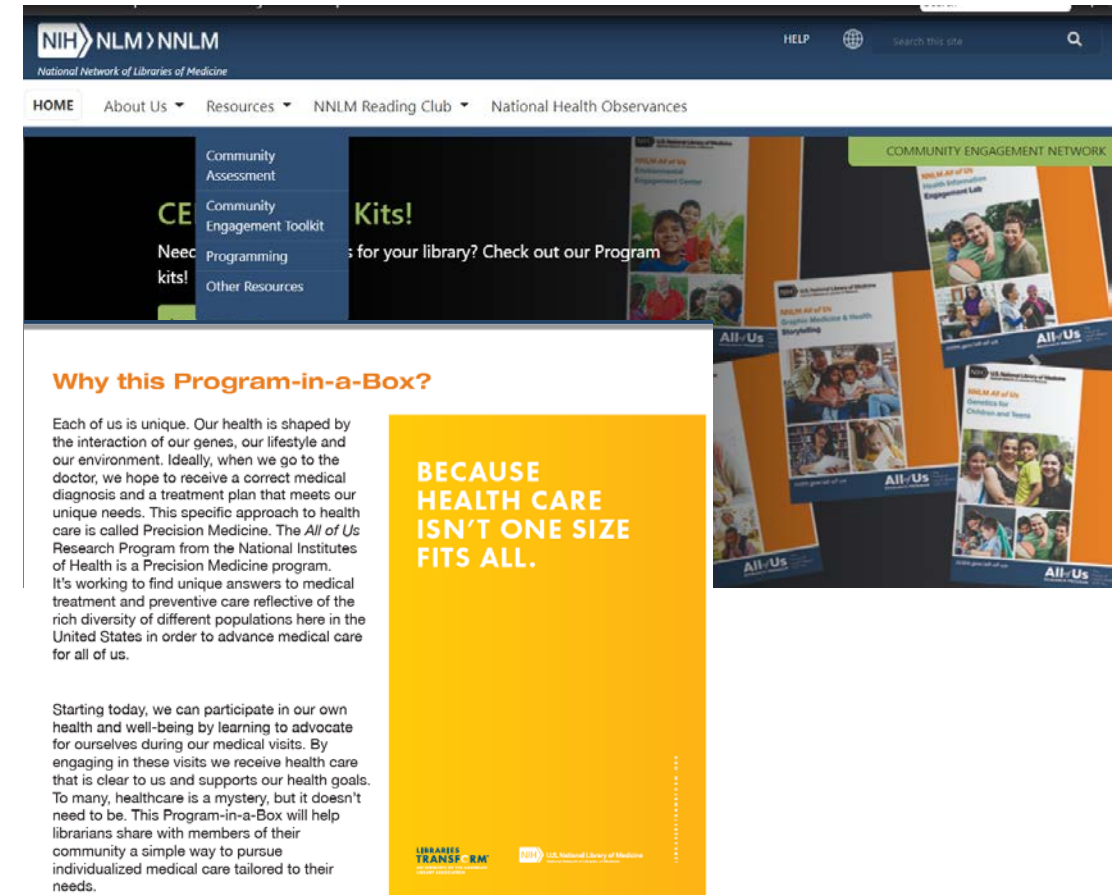


# NNLM PNR Support for Public Libraries



1. Training to increase health literacy skills of library staff
2. Support for Consumer Health Information Specialization certification
3. Funding for health information programs, services, outreach & technology
4. Making community connections; providing consultation, resources & support

## Community Engagement Network (CEN) Program Guides





# Idaho Commission on Aging

Birgit.Luebeck@aging.idaho.gov

[www.aging.idaho.gov](http://www.aging.idaho.gov)





# Prevent Institutionalization



- Stay at home, Stay healthy, Stay informed, Stay safe
- Entire State of Idaho
- Staff are available to travel to events: up to the Area Agencies on Aging's outreach coordinators
- Program Specialist for: Congregate Meals, Home-Delivered Meals, Senior Community Service Employment Program, Commodity Supplemental Food Program, Nutrition Service Incentive Program
- Our organization does not offer funding to libraries right now



**Area I - Director**  
**Sage Stoddard**  
**2120 N. Lakewood Dr. Suite B**  
**Coeur d'Alene, ID 83814**  
**208-929-4062**  
[esstoddard@nic.edu](mailto:esstoddard@nic.edu)

**Area II - Director**  
**Zeke Ulrey**  
**124 New 6th Street**  
**Lewiston, ID 83501**  
**208-743-5580 Ext: 4202**  
[z.ulrey@cap4action.org](mailto:z.ulrey@cap4action.org)

**Area III - Director**  
**Raul Enriquez**  
**701 S. Allen Ste. 100**  
**Meridian, ID 83642**  
**208-898-7070**  
[raul.enriquez@a3ssa.com](mailto:raul.enriquez@a3ssa.com)

**Area IV - Director**  
**Suzanne McCampbell**  
**315 Falls Ave**  
**Twin Falls, ID 83303**  
**208-736-3019**  
[smccampbell@csi.edu](mailto:smccampbell@csi.edu)

**Area V - Director**  
**Mike Hirschi**  
**214 E. Center**  
**Pocatello, ID 83205**  
**208-233-4032 Ext: 805**  
[mike@sicog.org](mailto:mike@sicog.org)

**Area VI - Director**  
**Morgan Nield**  
**935 Lincoln Road**  
**Idaho Falls, ID 83405**  
**208-522-5391 ext. 1052**  
[mniel@eicap.org](mailto:mniel@eicap.org)



**University of Idaho**  
Extension

**Andrew Bingham**

Financial Educator

abingham@uidaho.edu

**Ada  
County**

**Surine Greenway**

Food Safety Educator

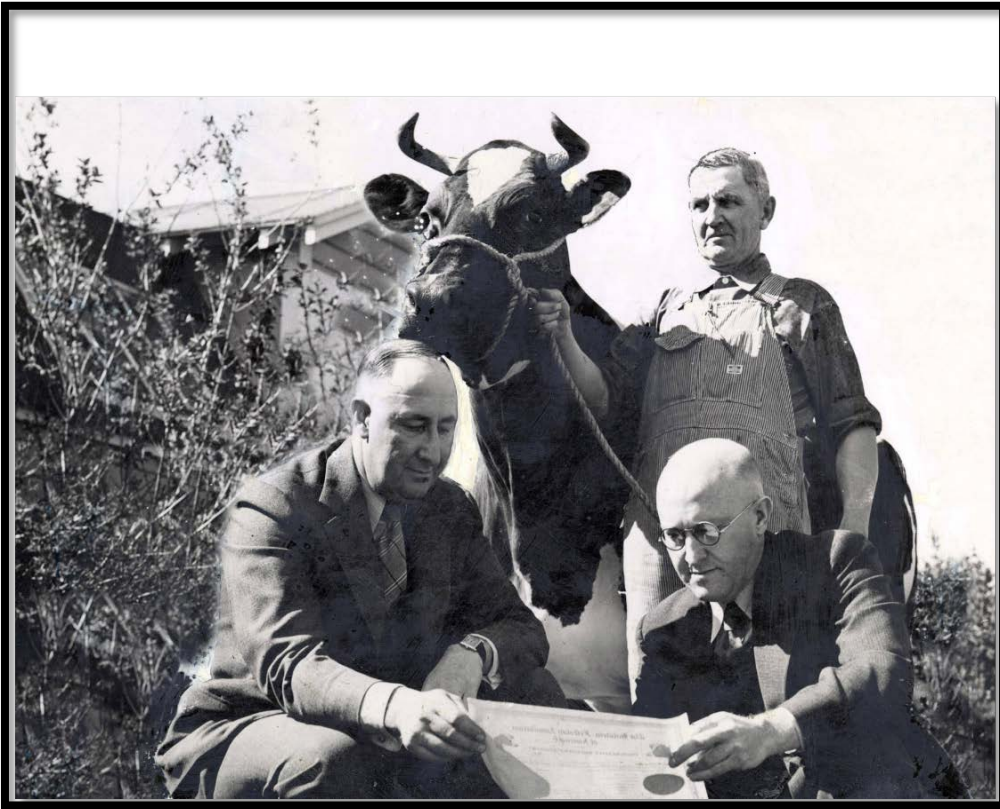
surineg@uidaho.edu

**Owyhee  
County**

**Website: [www.uidaho.edu/extension](http://www.uidaho.edu/extension)**



# Extension Program Areas



- Agriculture
- 4-H/Youth Development
- Horticulture
  - Master Gardeners
  - Food Systems
- Family and Consumer Sciences
  - Consumer Finance
  - Health and Nutrition
  - Food Safety

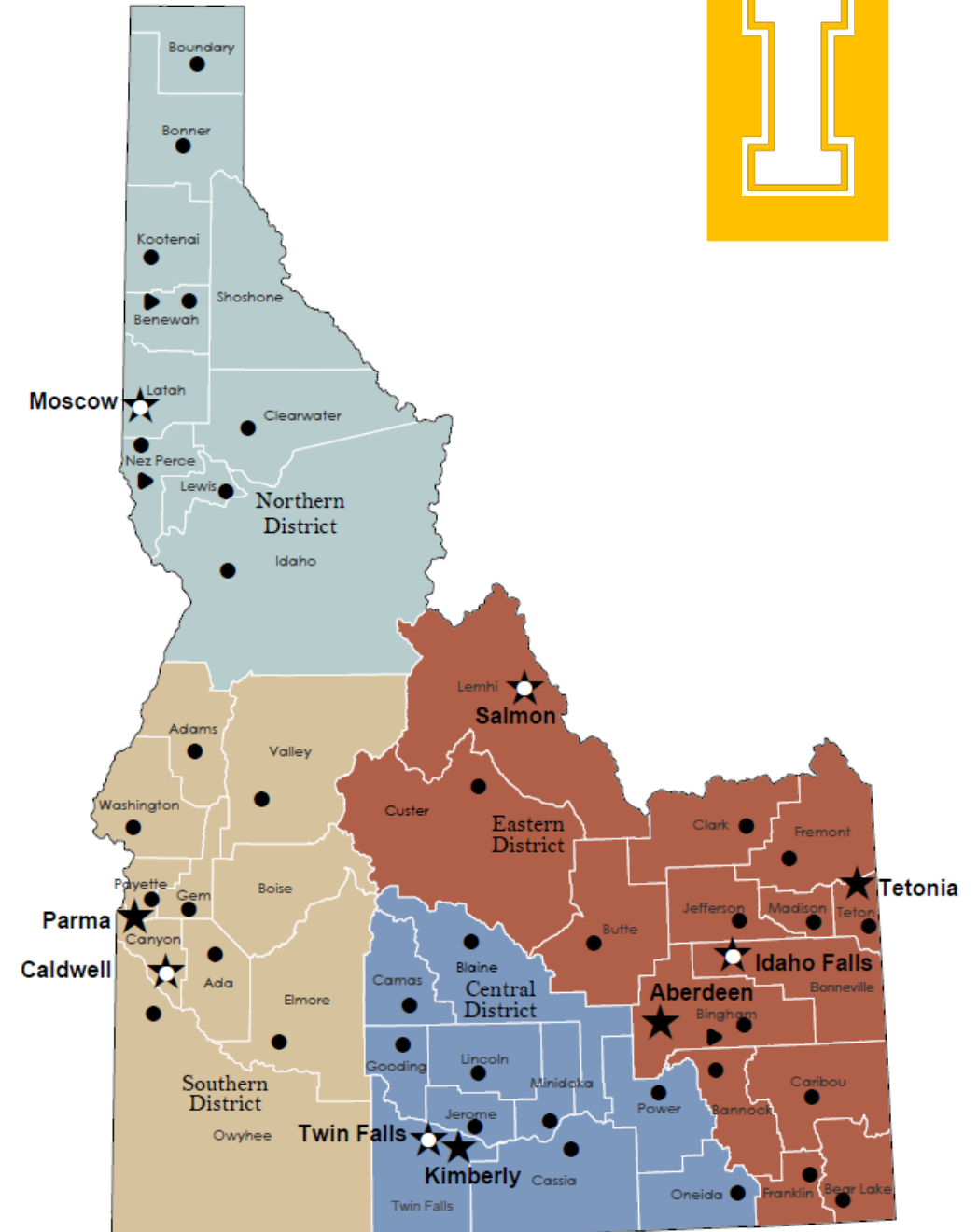
# Extension Locations

Offices in 42 of 44 counties

93 Extension Educators

## How to Partner:

- [uidaho.edu/yourcounty](http://uidaho.edu/yourcounty)
- Find your Educator
- Ask for programs
- Share your ideas!





# Idaho Commission on the Arts

[arts.idaho.gov](http://arts.idaho.gov)

Contact the Arts Education Director

*(They were unable to attend the event, but are still interested in partnering with libraries)*

- Idaho Commission on the Arts is a state agency under the Office of the Governor, that enables access to the arts, arts education, and Idahoans' cultural and artistic heritage.
- Browse projects - Find a teaching artist to work with and more. Arts Idaho enriches the learning experience by integrating the arts with other fields of study.
- Directory of Teaching Artists – Find artists ready to teach their craft to your community





# Hello Neighbor!

Bring a folk artist from your community to your library and learn what they do.



# Making Learning Visible

See how the arts come to life through schools, artists, and community organizations.

View completed annual grant projects from over the years



# Poetry Out Loud

Put words into action with  
national poetry recitation  
contest for high school  
students

