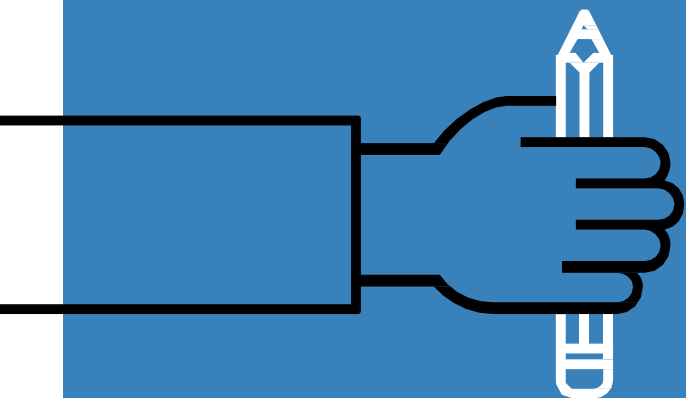
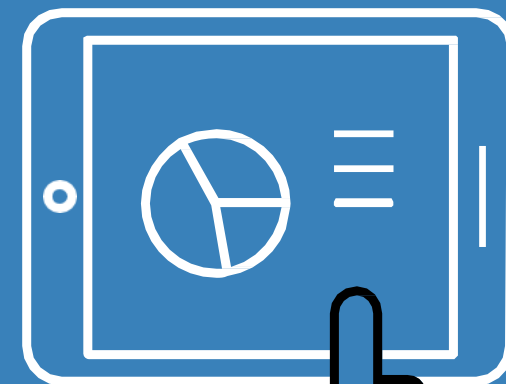
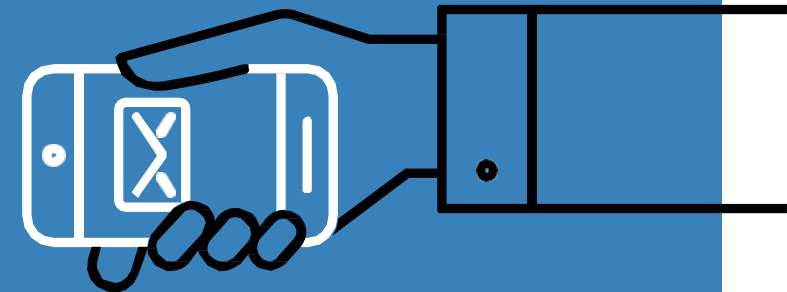


Data Visualization





Public Library Data

| Populations and Borrowers | | | | | | | | |
|-------------------------------|-------------------------|-------------------------------------|--------------------------|----------------------------|------------------------------------|-------------------------|------------------------|---|
| Public Libraries | Populations | | | Borrowers | | | | |
| | Total Population Served | Legal Service Area (LSA) Population | Contract Area Population | Total Registered Borrowers | Legal Service Area (LSA) Borrowers | Contract Area Borrowers | Non-Resident Borrowers | Population % Served With a Library Card |
| Over 10,000 | | | | | | | | |
| Boise Public | 223,154 | 223,154 | 0 | 113,808 | 113,171 | 0 | 637 | 51% |
| Idaho Falls Public | 117,993 | 60,211 | 27,677 | 86,361 | 57,369 | 27,677 | 1,315 | 72% |
| Community Library Network | 111,472 | 111,472 | 0 | 68,138 | 67,676 | 0 | 462 | 61% |
| Meridian District | 105,940 | 105,940 | 0 | 54,537 | 54,249 | 0 | 288 | 51% |
| Nampa Public | 91,382 | 91,382 | 0 | 57,088 | 52,164 | 0 | 4924 | 57% |
| Marshall Public | 54,746 | 54,746 | 0 | 57,416 | 48,324 | 0 | 9,092 | 88% |
| Ada Community | 53,466 | 53,466 | 0 | 30,839 | 30,138 | 0 | 701 | 56% |
| Caldwell Public | 53,149 | 53,149 | 0 | 25,151 | 23,549 | 0 | 1,602 | 44% |
| Coeur d'Alene Public | 50,285 | 50,285 | 0 | 38,807 | 38,704 | 0 | 103 | 77% |
| Twin Falls Public | 48,260 | 48,260 | 0 | 30,937 | 28,055 | 0 | 2,882 | 58% |
| Latah County District | 39,678 | 39,678 | 0 | 15,656 | 15,110 | 0 | 546 | 38% |
| Madison District | 36,744 | 36,744 | 0 | 30,844 | 28,080 | 0 | 2,764 | 76% |
| East Bonner County District | 33,910 | 33,910 | 0 | 15,230 | 14,386 | 0 | 844 | 42% |
| Lewiston Public | 32,872 | 32,872 | 0 | 21,841 | 20,315 | 0 | 1,626 | 62% |
| Huna District | 30,027 | 30,027 | 0 | 6,699 | 6,591 | 0 | 108 | 22% |
| Eagle Public | 29,910 | 29,910 | 0 | 12,849 | 12,882 | 0 | 67 | 43% |
| Portneuf District | 23,020 | 23,020 | 0 | 16,055 | 12,425 | 0 | 3,630 | 54% |
| Blackfoot Public | 19,377 | 11,890 | 2,896 | 10,789 | 6,405 | 2,896 | 1,488 | 48% |
| Prairie River District | 17,193 | 17,193 | 0 | 3,912 | 3,907 | 0 | 5 | 23% |
| Mountain Home Public | 13,840 | 13,840 | 0 | 10,566 | 9,278 | 0 | 1,288 | 67% |
| Larsen-Sant Public | 13,561 | 13,561 | 0 | 6,218 | 6,172 | 0 | 46 | 46% |
| North Bingham County District | 12,429 | 12,429 | 0 | 7,089 | 7,069 | 0 | 20 | 57% |
| Boundary County District | 11,921 | 11,921 | 0 | 5,616 | 5,369 | 0 | 247 | 45% |
| Fremont County District | 11,769 | 11,769 | 0 | 5,955 | 5,907 | 0 | 48 | 50% |
| St. Maries Public | 11,713 | 2,428 | 9285 | 4,285 | 1,151 | 3,122 | 12 | 36% |
| Garden City Public | 11,602 | 11,602 | 0 | 7,683 | 7,660 | 0 | 23 | 66% |
| Jerome Public | 11,317 | 11,317 | 0 | 6,031 | 4,712 | 0 | 1,319 | 42% |
| Valley of the Tetons District | 10,738 | 10,738 | 0 | 8,181 | 8,177 | 0 | 4 | 76% |
| Burley Public | 10,464 | 10,464 | 0 | 6,690 | 5,088 | 0 | 1,602 | 49% |
| Subtotal | 1,291,932 | 1,217,378 | 39,858 | 765,471 | 694,083 | 33,695 | 37,693 | |
| 5,001-10,000 | | | | | | | | |
| Hailey Public | 8,218 | 8,218 | 0 | 5,301 | 4,367 | 0 | 934 | 53% |
| Lemhi County District | 8,065 | 8,065 | 0 | 6,087 | 6,077 | 0 | 10 | 75% |
| Clearwater District | 7,978 | 7,978 | 0 | 3,338 | 3,338 | 0 | 0 | 42% |
| Snake River School/Community | 7,960 | 7,960 | 0 | 7,633 | 7,633 | 0 | 0 | 96% |
| West Bonner District | 7,872 | 7,872 | 0 | 3,252 | 3,252 | 0 | 0 | 41% |
| Payette Public | 7,414 | 7,414 | 0 | 2,990 | 2,654 | 0 | 336 | 36% |
| American Falls District | 7,197 | 7,197 | 0 | 6,122 | 5,410 | 0 | 712 | 75% |
| Middleton Public | 7,168 | 7,168 | 0 | 4,202 | 3,269 | 0 | 933 | 46% |
| South Bannock District | 7,100 | 7,100 | 0 | 4,103 | 4,100 | 0 | 3 | 58% |
| Emmett Public | 6,717 | 6,717 | 0 | 5,798 | 3,900 | 0 | 1,898 | 58% |
| Bear Lake County District | 6,013 | 6,013 | 0 | 4,716 | 4,714 | 0 | 2 | 78% |
| Jefferson County District | 5,971 | 5,971 | 0 | 2,271 | 2,271 | 0 | 0 | 38% |
| DeMery Memorial | 5,813 | 5,813 | 0 | 2,522 | 1,751 | 0 | 771 | 30% |
| Lizard Butte District | 5,707 | 5,707 | 0 | 2,383 | 2,367 | 0 | 16 | 41% |
| Sugar Salem School/Community | 5,688 | 5,688 | 0 | 4,868 | 4,818 | 0 | 50 | 85% |
| Weiser Public | 5,397 | 5,397 | 0 | 4,485 | 3,937 | 0 | 548 | 73% |
| Subtotal | 110,278 | 110,278 | 0 | 70,071 | 63,858 | 0 | 6,213 | |

Idaho Public Library Statistics - FY18

12 of 67

Quick Facts About Idaho Public Libraries

From the 2018 Idaho Public Library Statistics

Libraries Are For Everyone



8,169,435 people visited Idaho's **149 Public Libraries** and **12 Bookmobiles** in FY 2018

1,017,002 people attended one of the **38,785** programs held in libraries. That's the same as **106** programs every day over the past year.



905,455 people have a current library card. That's just over **52%** of the population of Idaho.

5,755 different volunteers donated **82,044** hours at their local library. That's **more than 9 hours** of volunteer time every day.

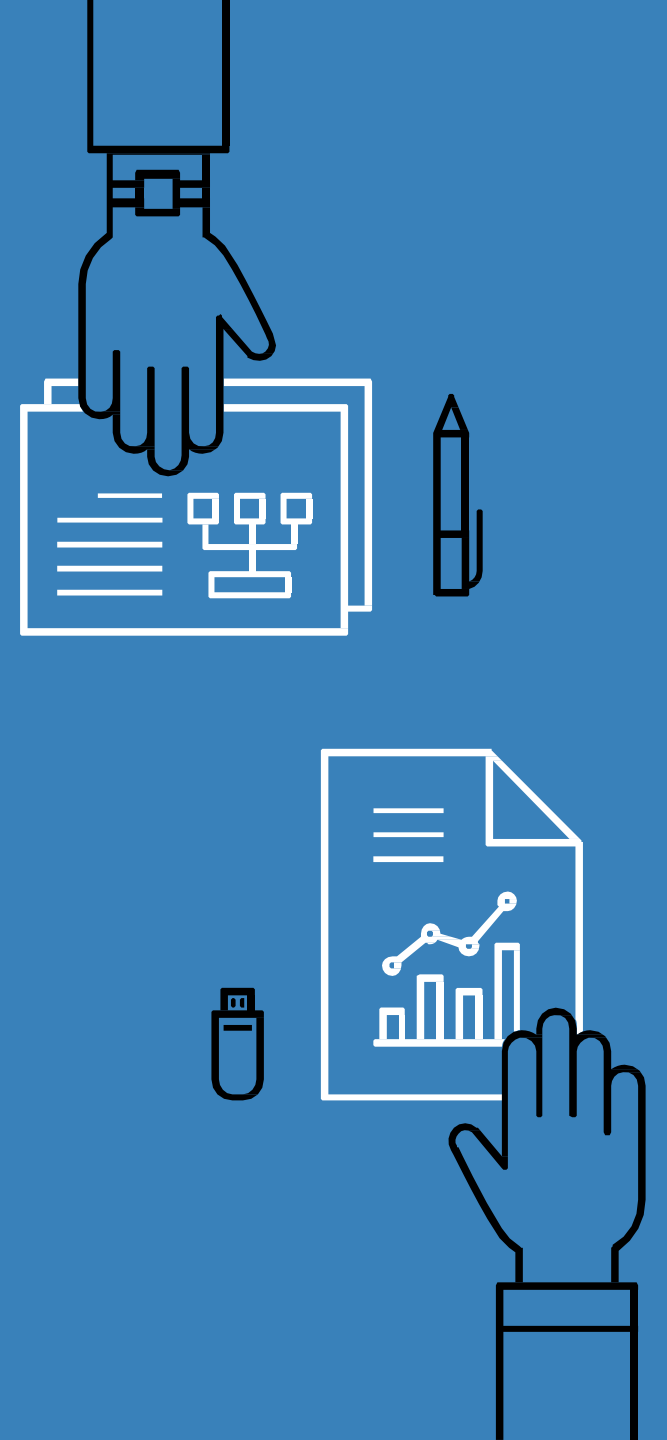


ICfL Idaho Commission for Libraries

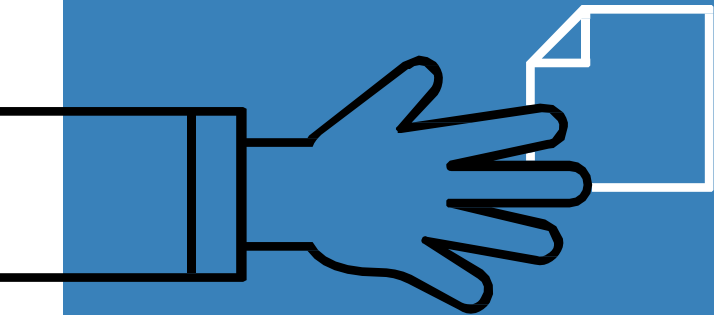
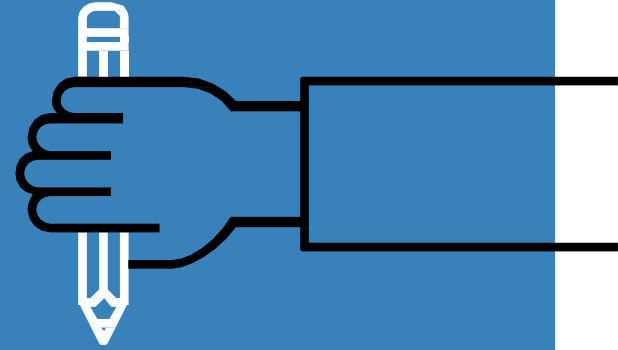


Today

- Effective visualization principles
- Quick and easy tips to improve any visualization
- Design principles

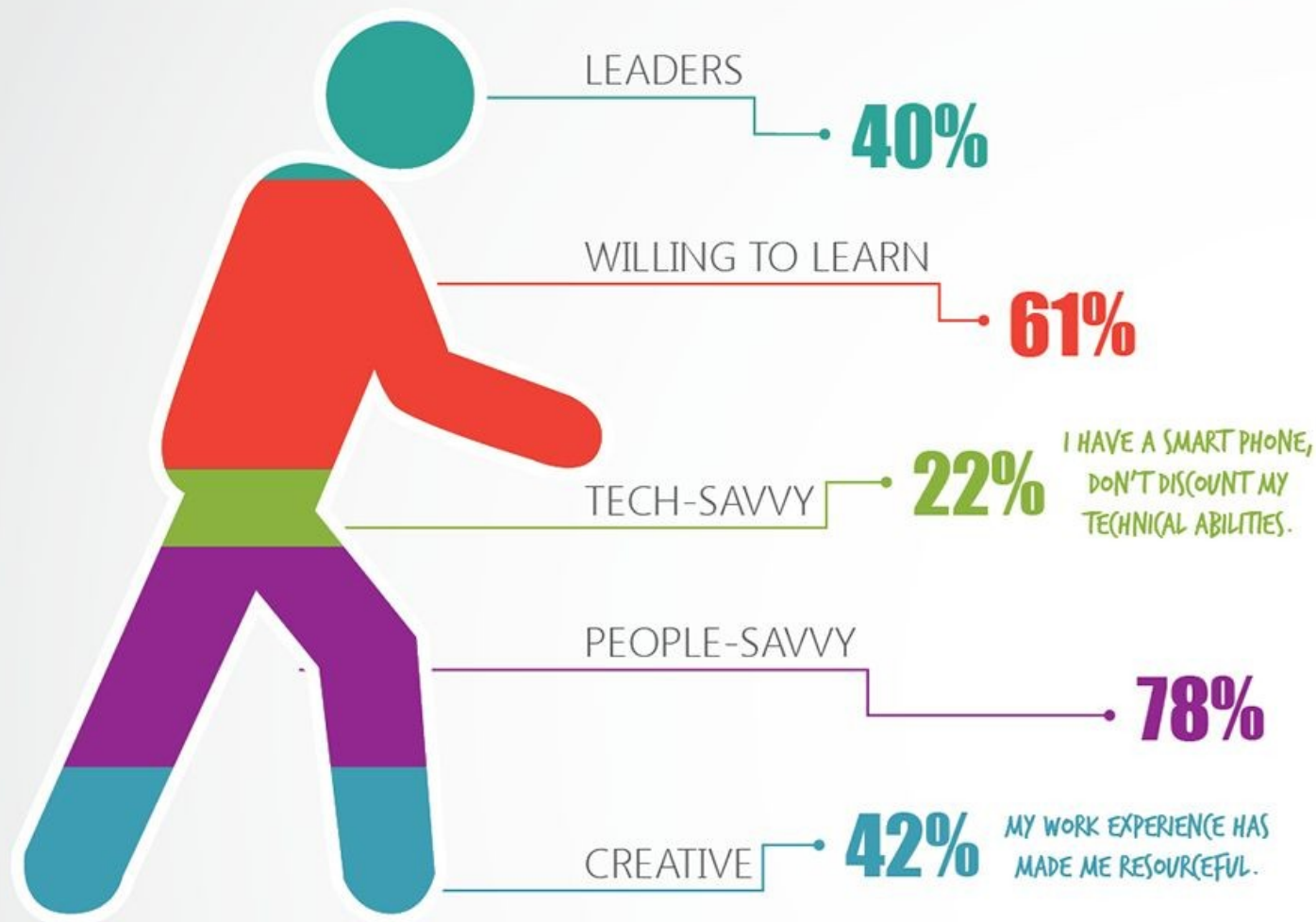


Building effective visualizations



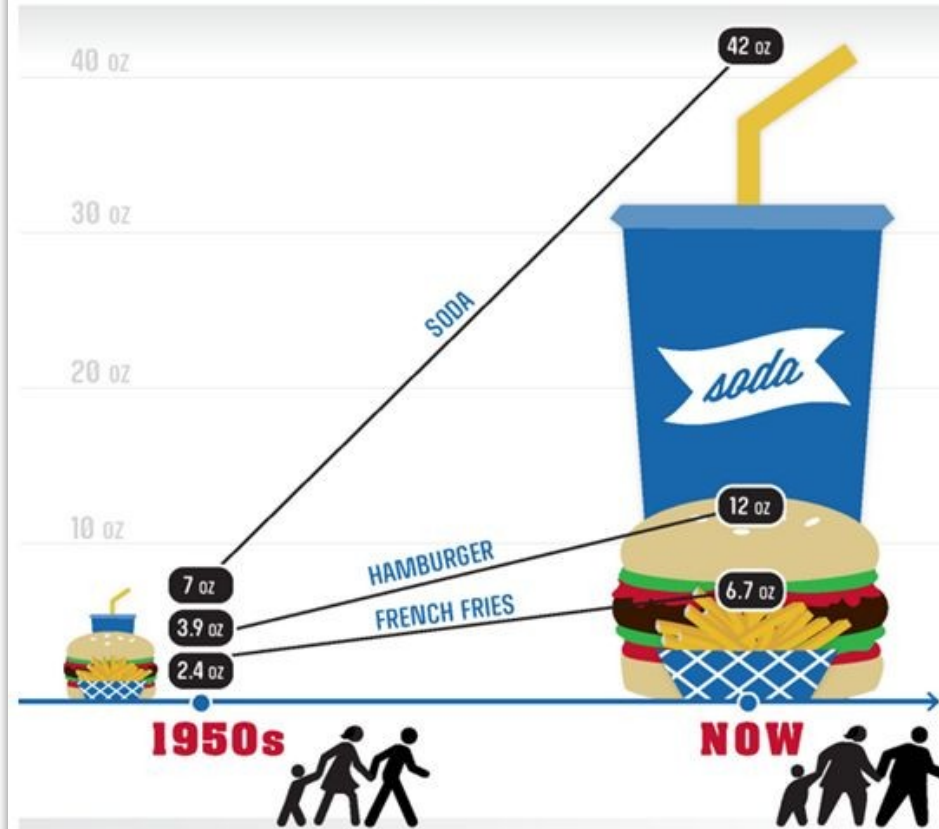


HOW **BOOMERS** DESCRIBE THEMSELVES



THE NEW (AB)NORMAL

Portion sizes have been growing. So have we. The average restaurant meal today is more than four times larger than in the 1950s. And adults are, on average, 26 pounds heavier. If we want to eat healthy, there are things we can do for ourselves and our community: Order the smaller meals on the menu, split a meal with a friend, or eat half and take the rest home. We can also ask the managers at our favorite restaurants to offer smaller meals.



FOR MORE INFORMATION, VISIT
MakingHealthEasier.org/TimeToScaleBack

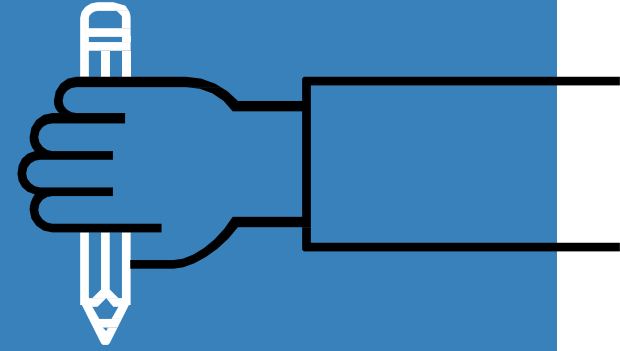
SOURCES

Young, L., & Nestle, M. (2002). The contribution of expanding portion sizes to the US obesity epidemic. *APM*, 32(1), 246-48.

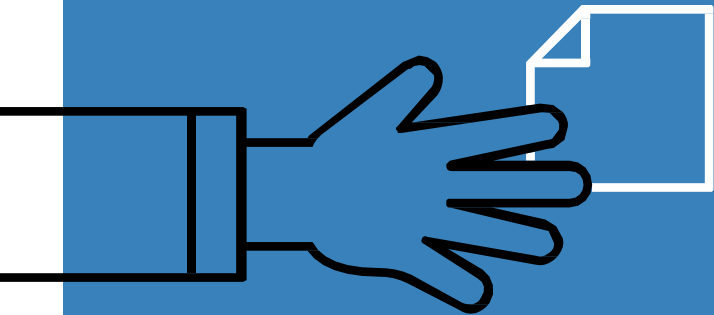
Young, L., & Nestle, M. (2002). Portion sizes and obesity: Responses of fast food companies. *JHMR*, 18(2), 238-48.

CDC, *Advance Data*, No. 343, Oct. 23, 2004.

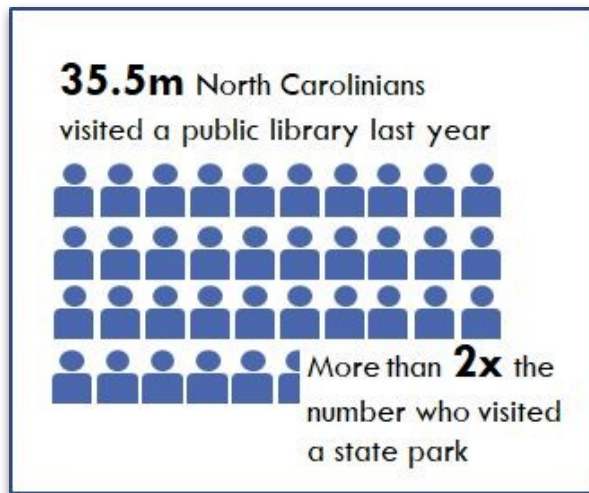
CDC, *National Health Statistics Reports*, No. 10, Oct. 21, 2008.



Quick and easy tips to
improve any visualization



Tip: Provide context for numbers

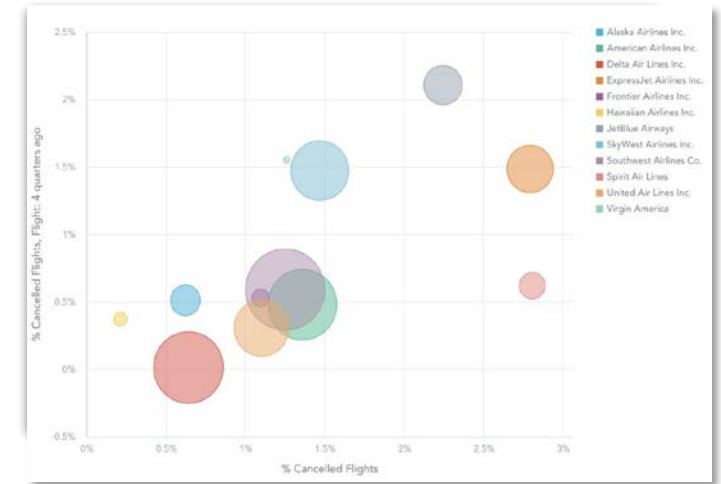
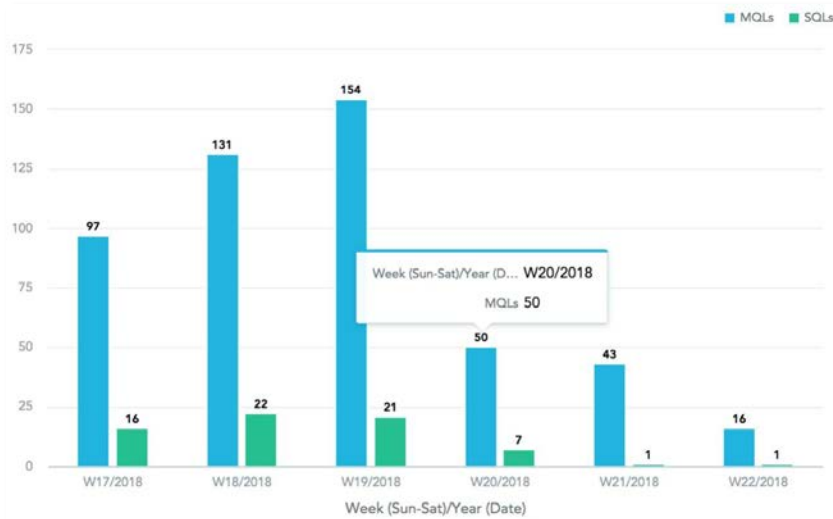
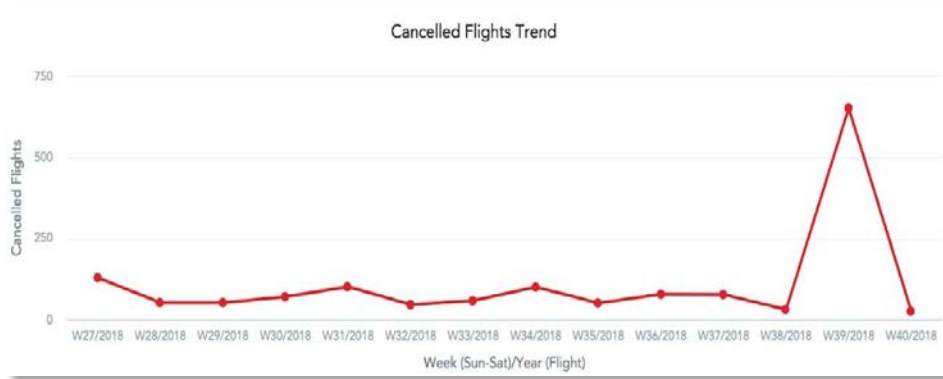


[Source](#)



[Source](#)

Tip: Choose charts wisely

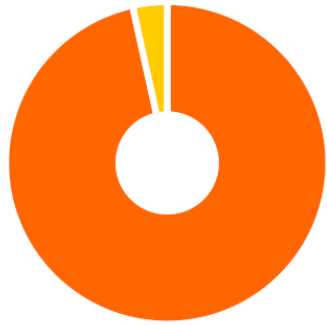


[Source](#)

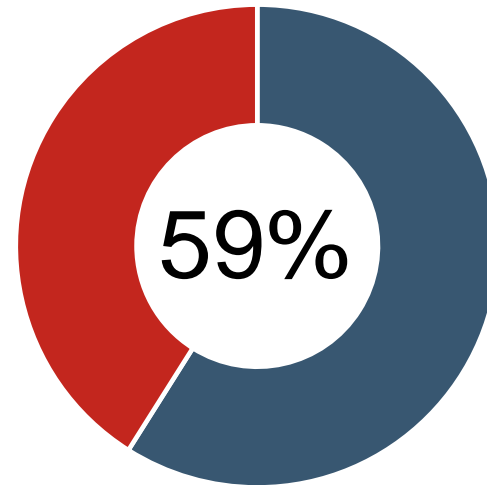


Small numbers, percentages, frequencies

More than **5.6 MILLION** items in Idaho libraries



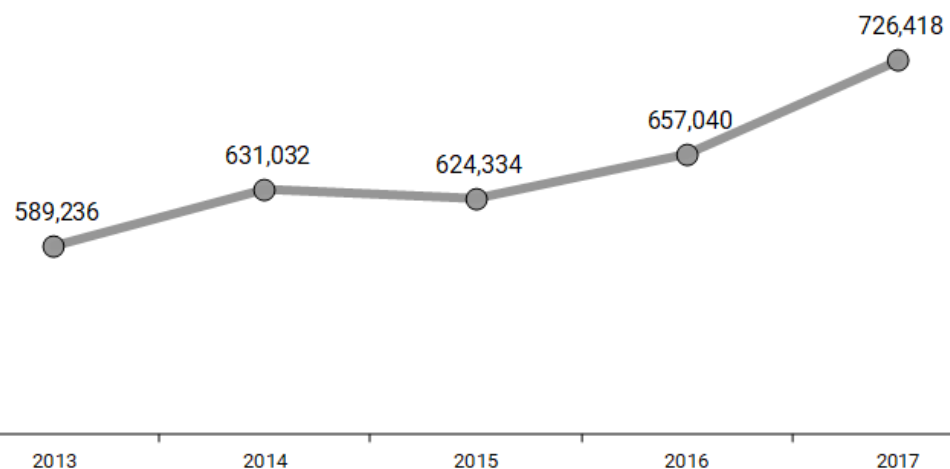
96% of all public libraries
provide free wireless internet



Idaho residents with an active
library card

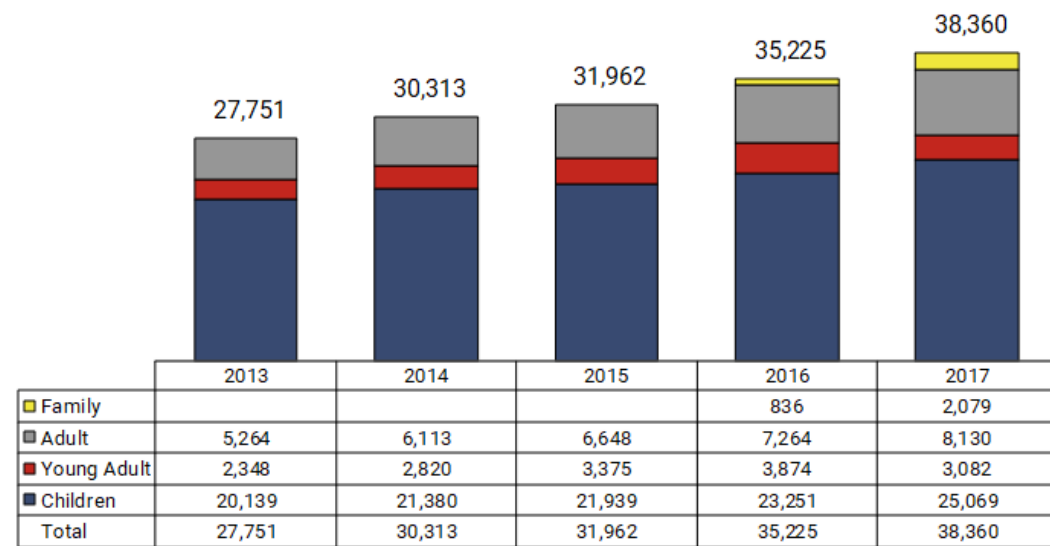
Time

Children's Program Attendance

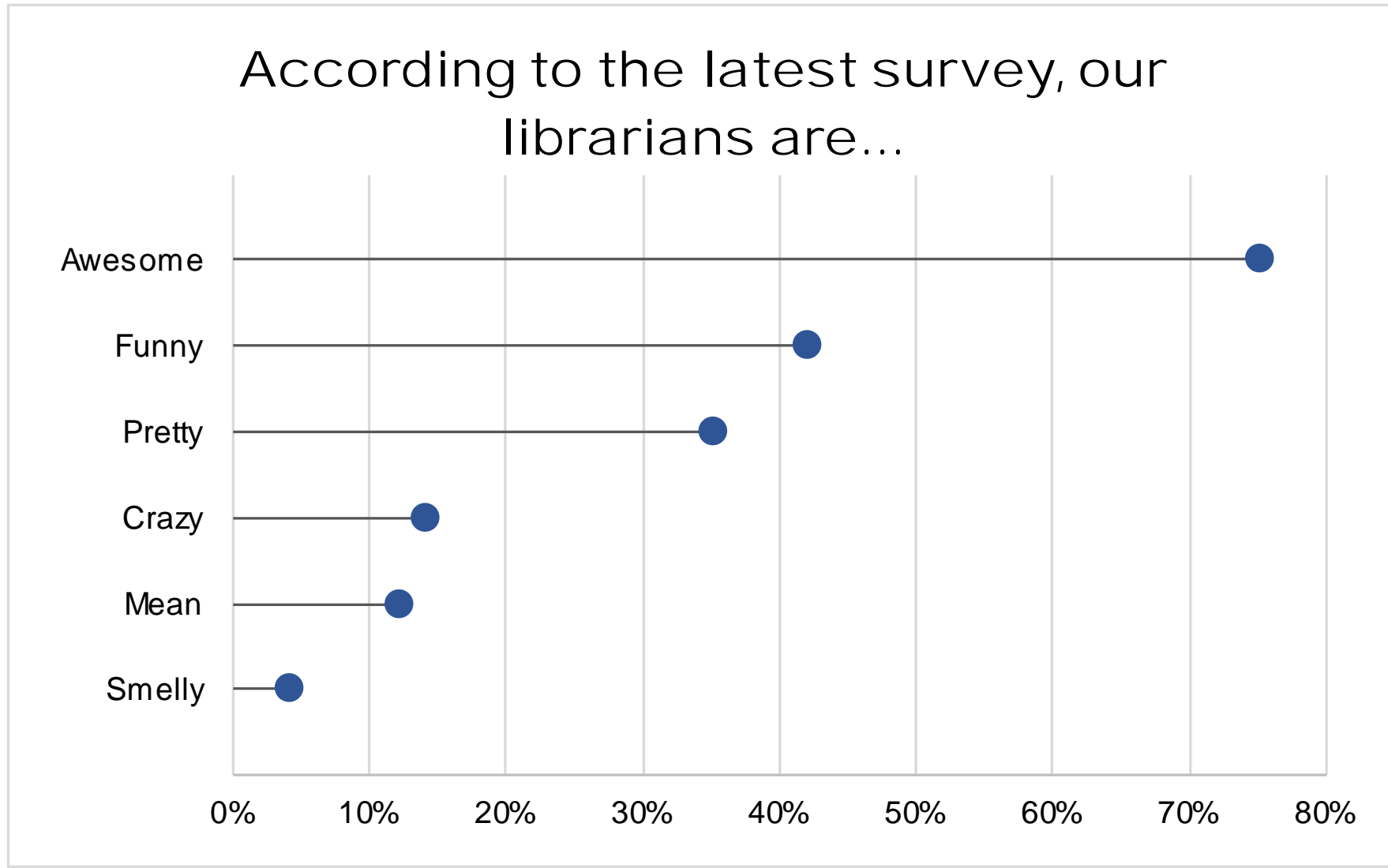


Total Library Programs Held

Libraries are increasing the number of programs held each year

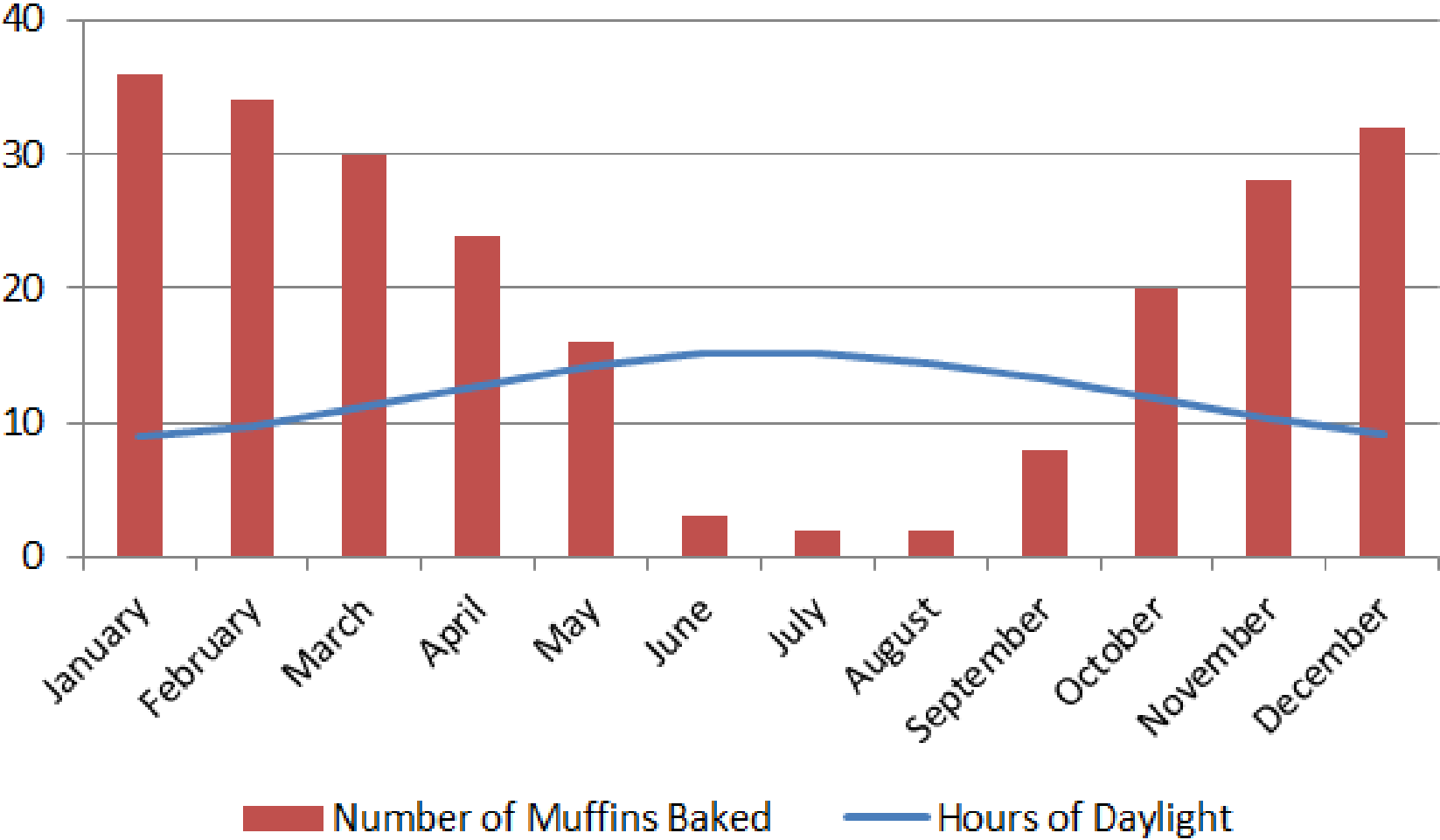


Survey responses

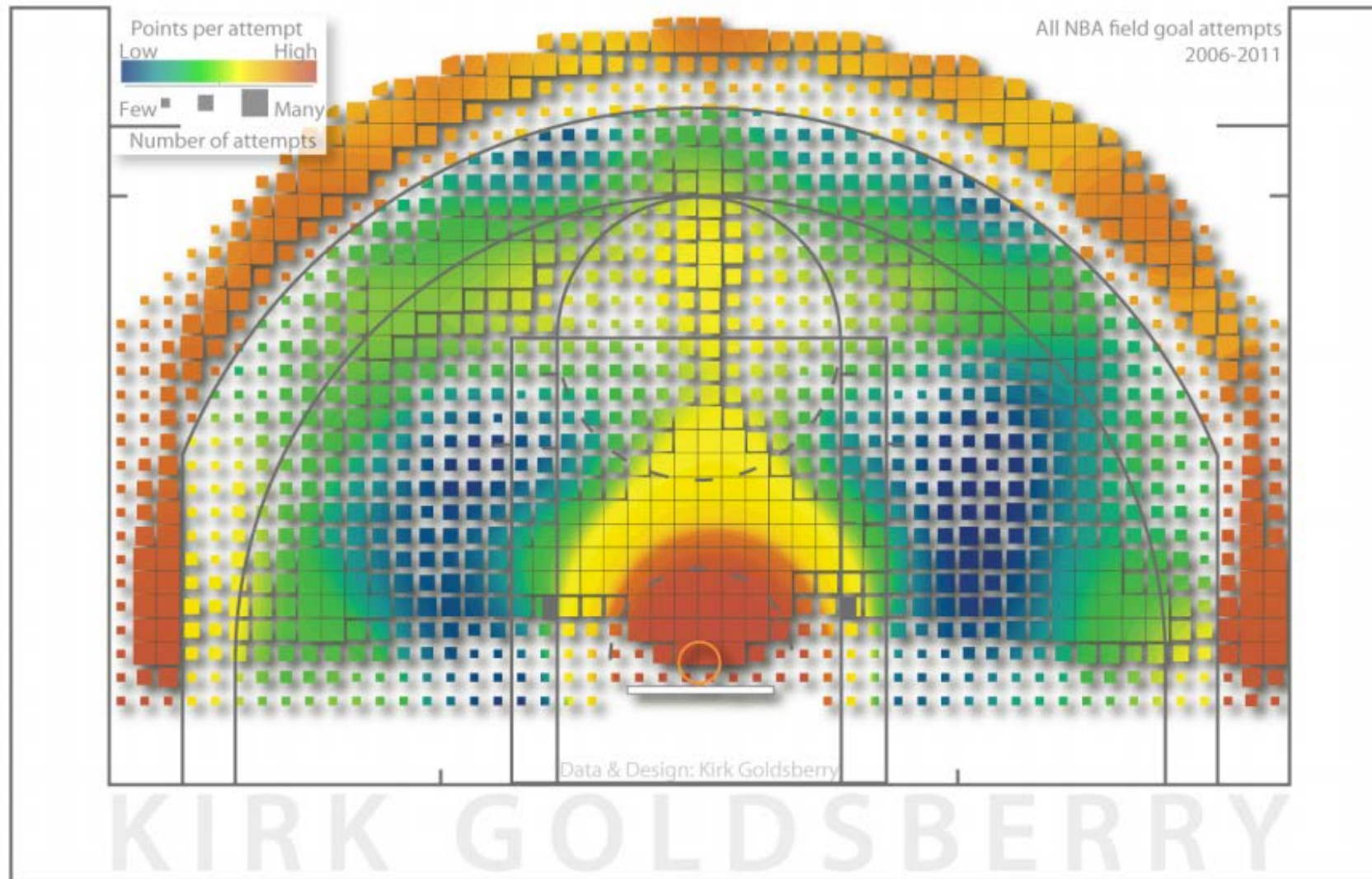




Comparisons

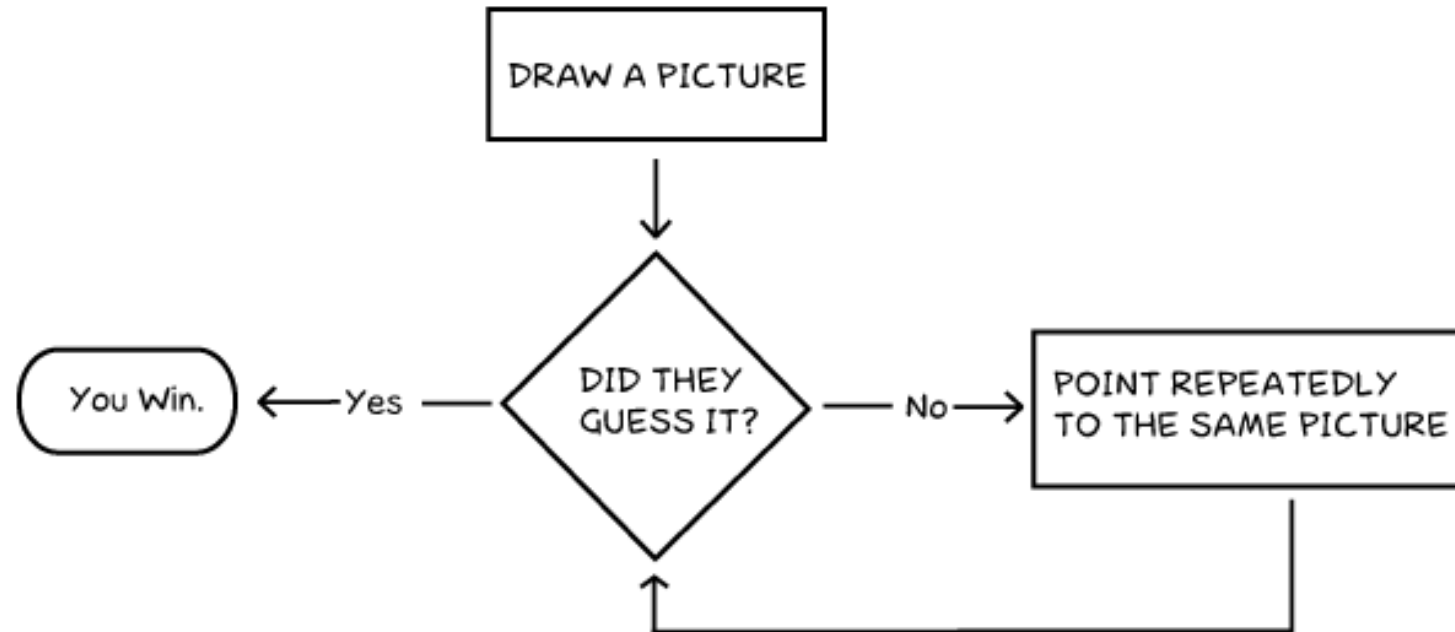


Place



It's Complicated!

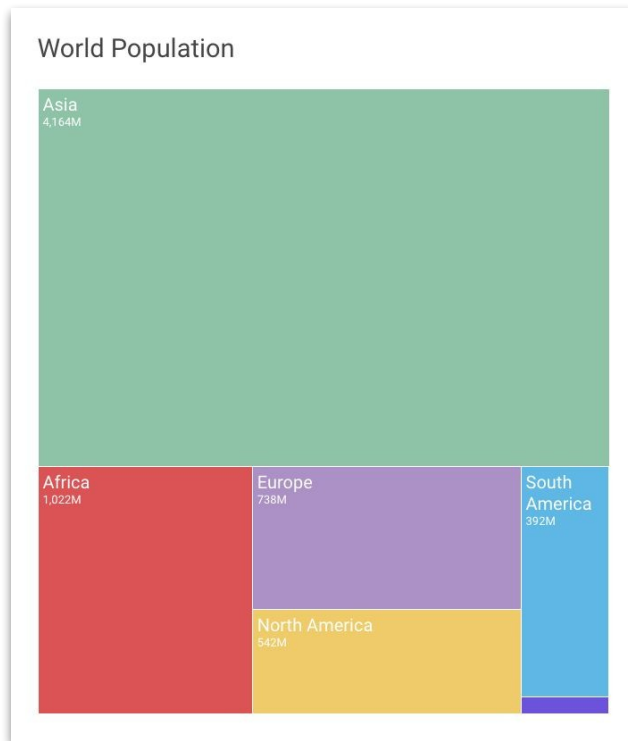
How To Play Pictionary



Doghouse Diaries
"Where pennies are a dime a dozen."

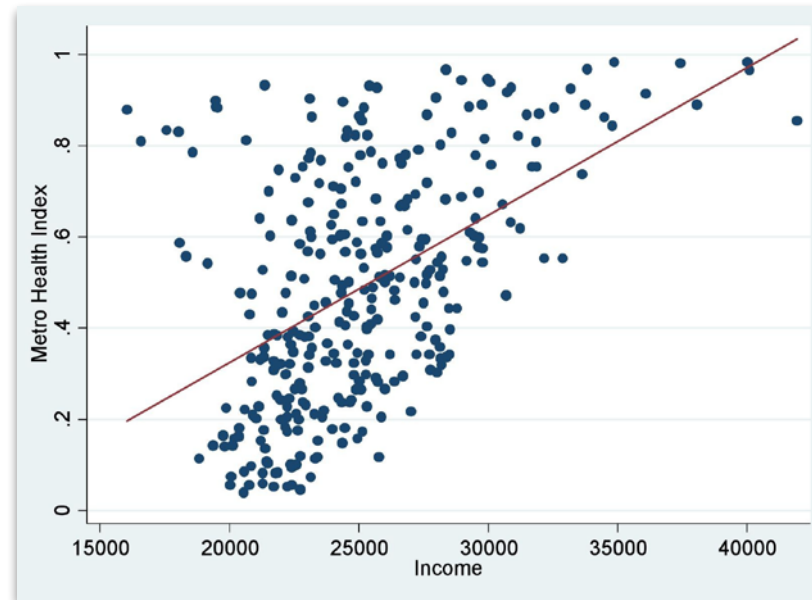
Other Charts

Treemap



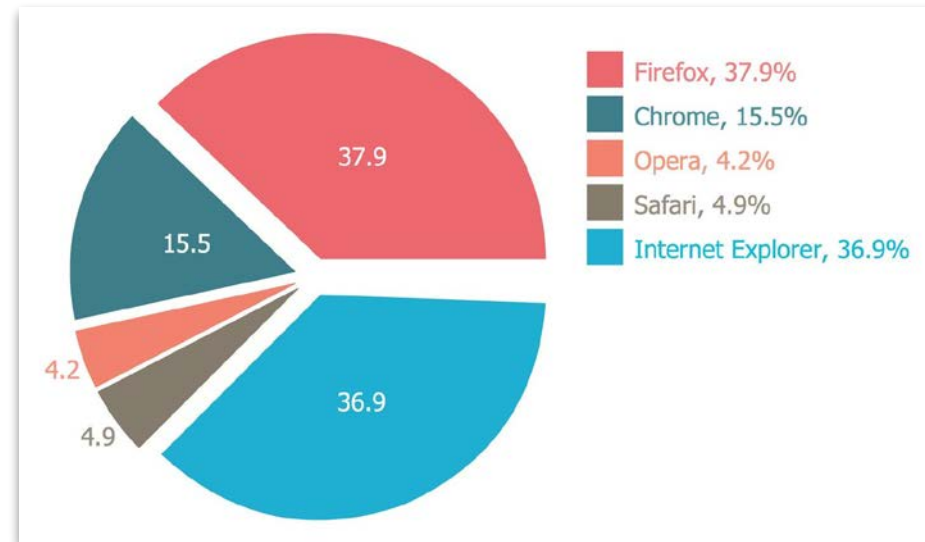
[Source](#)

Scatter Plot



[Source](#)

Pie Chart



[Source](#)

Chart Types: Excel

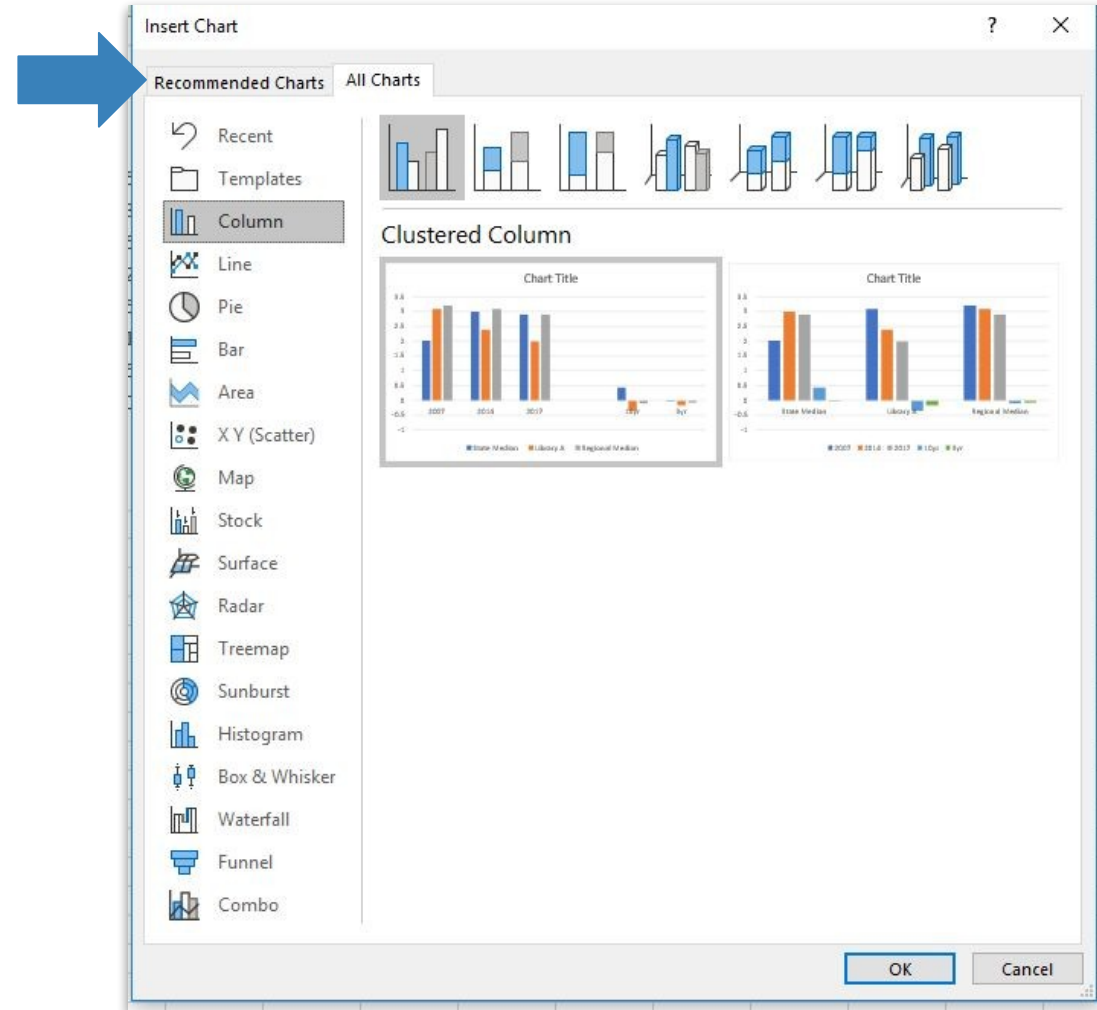
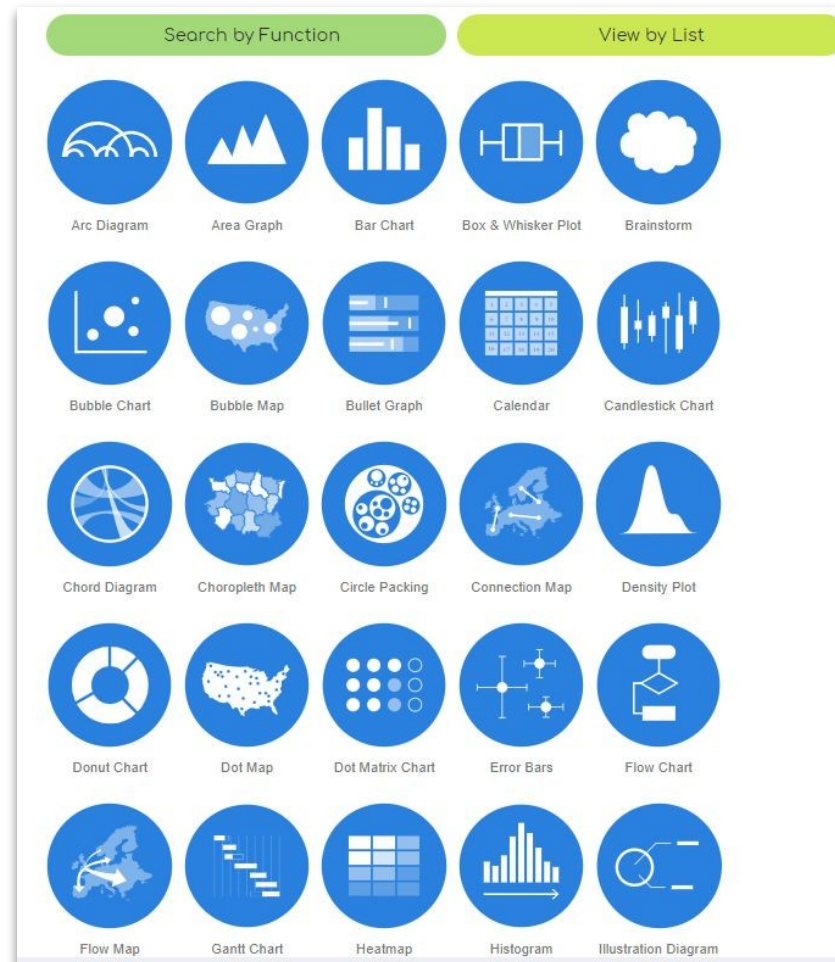
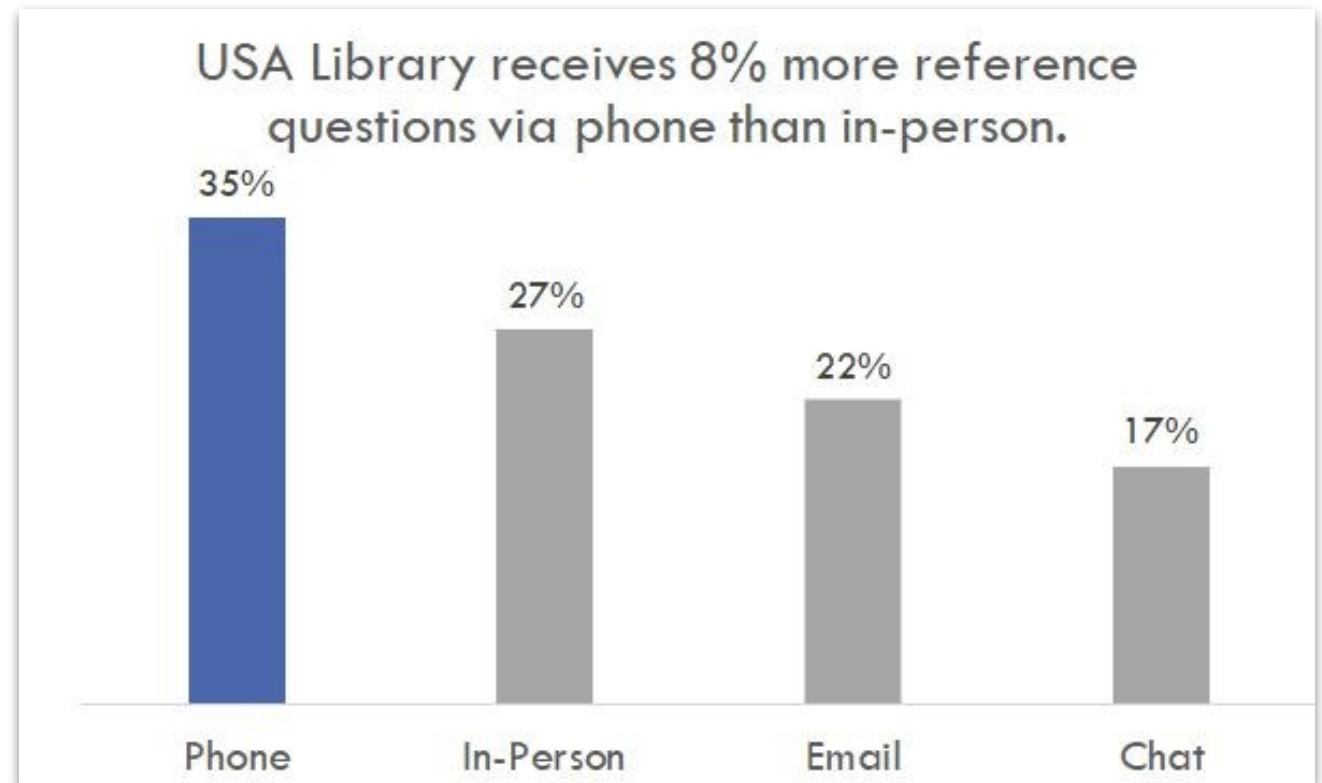
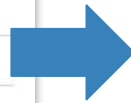
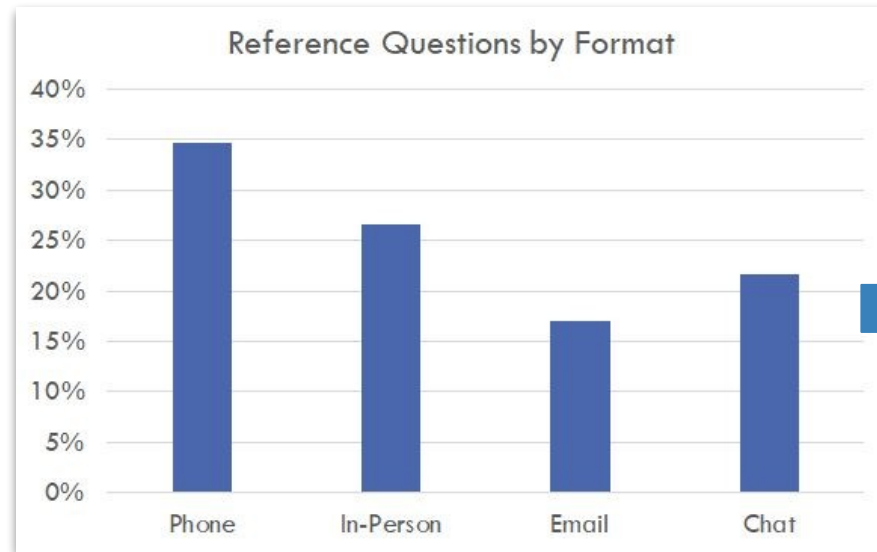


Chart Types: Even more

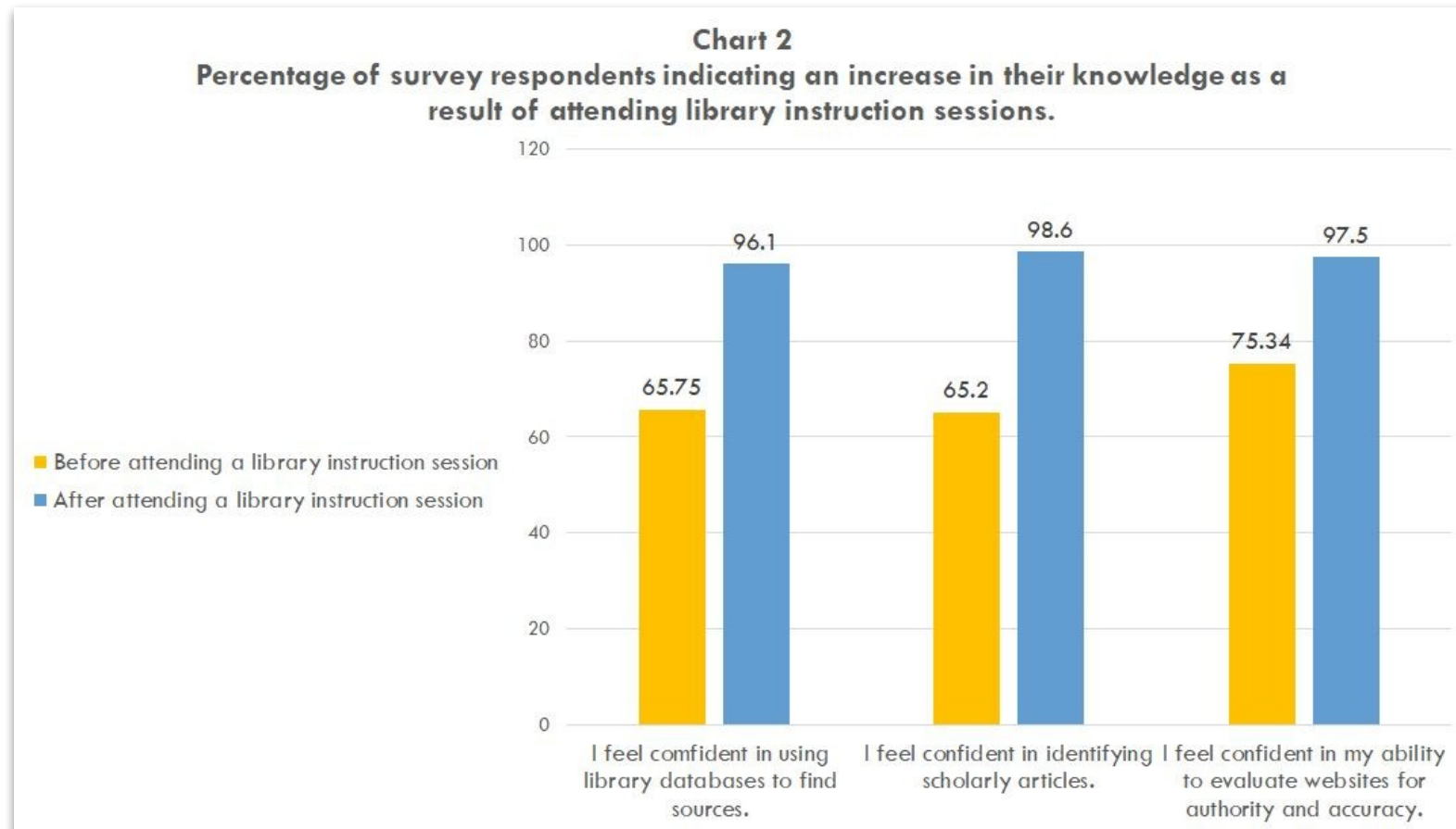
Data Viz Catalogue Chart Picker



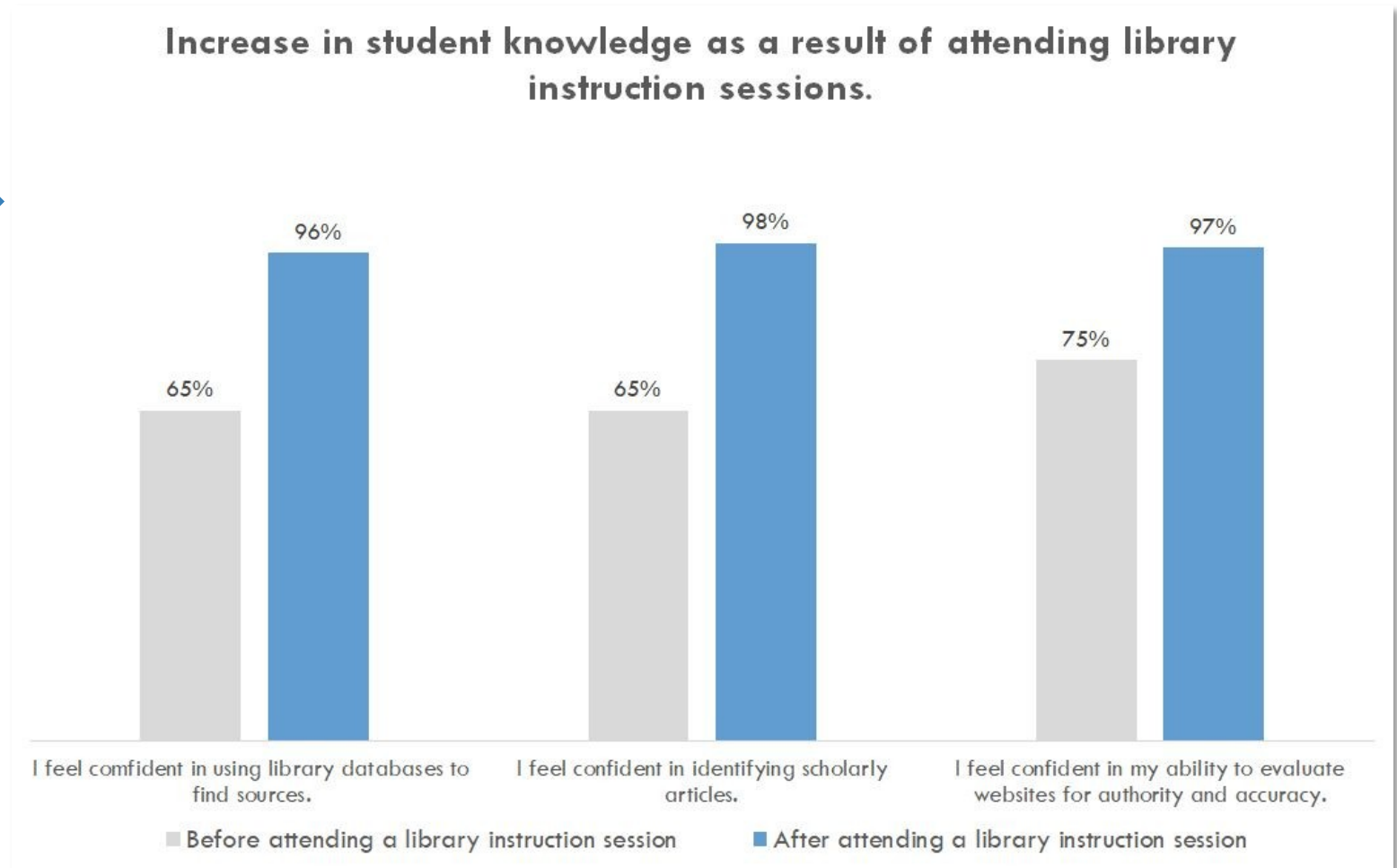
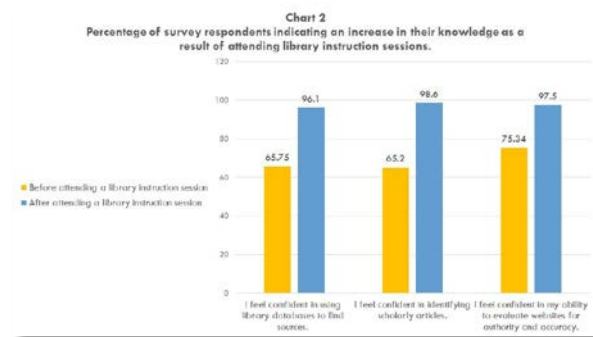
Tip: Do the work for your audience



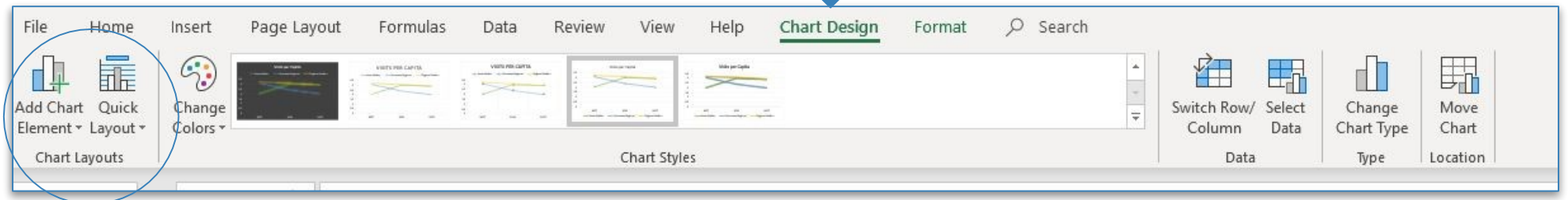
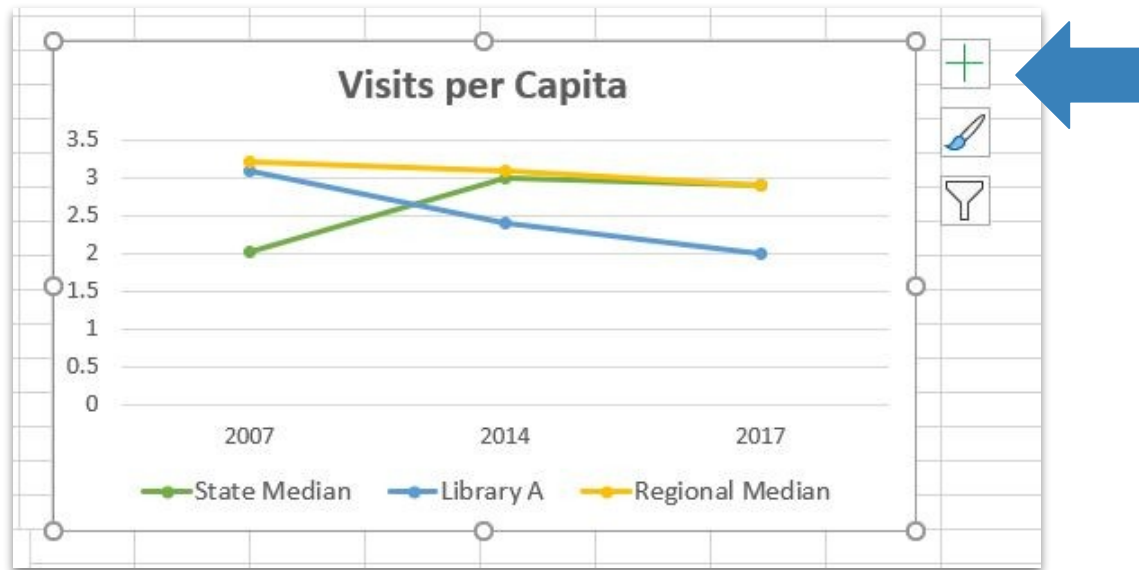
Tip: Do the work for your audience

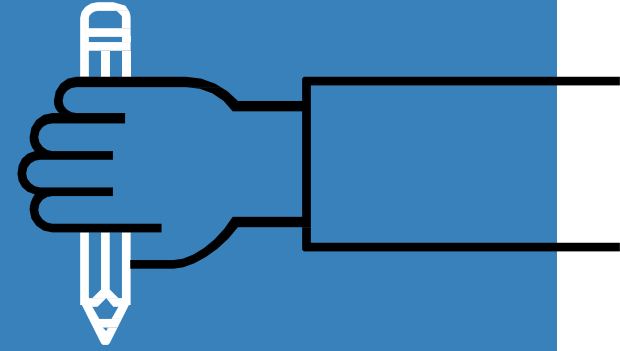


Tip: Do the work for your audience



Tip: Do the work for your audience





Activity: Chart Critique

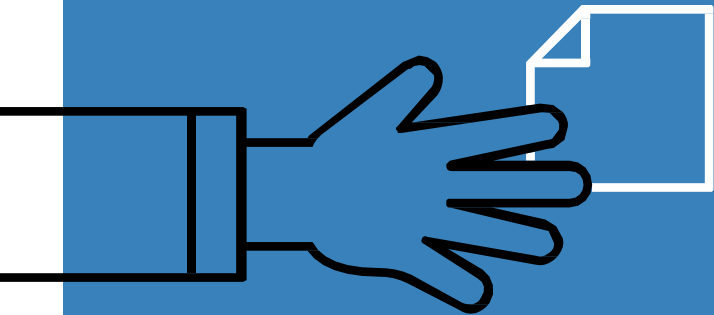
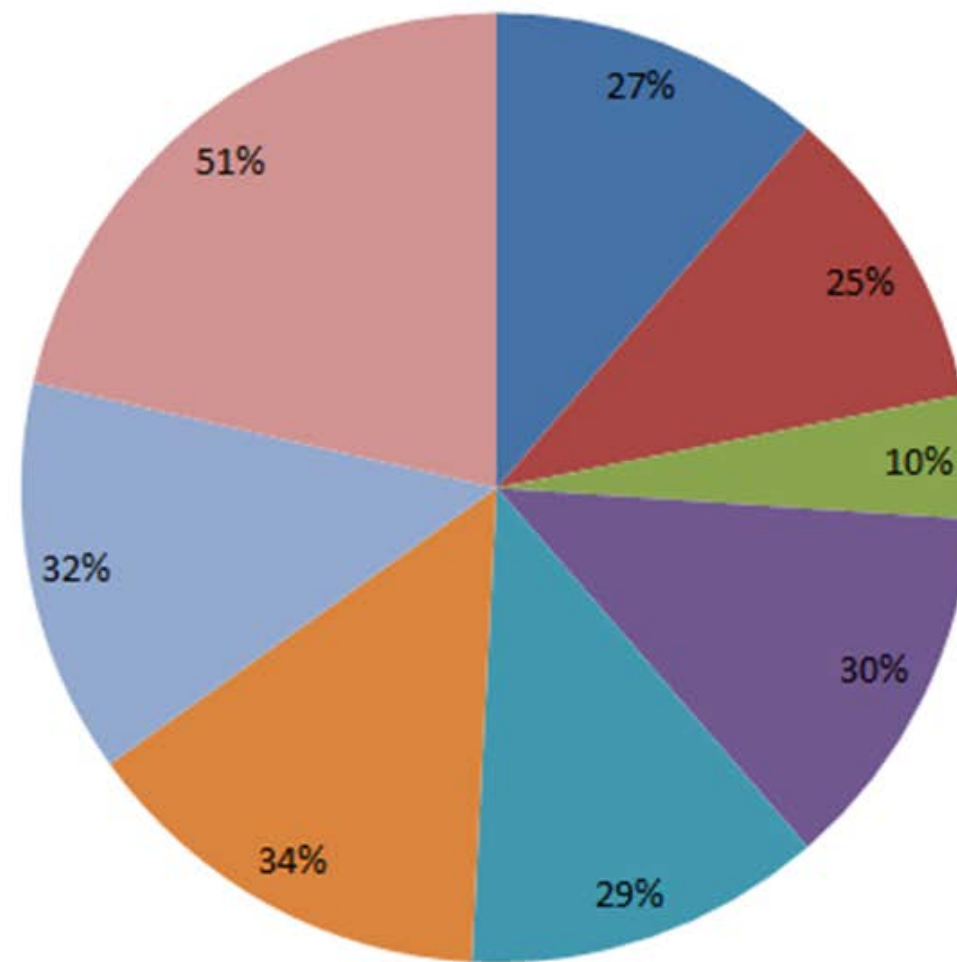




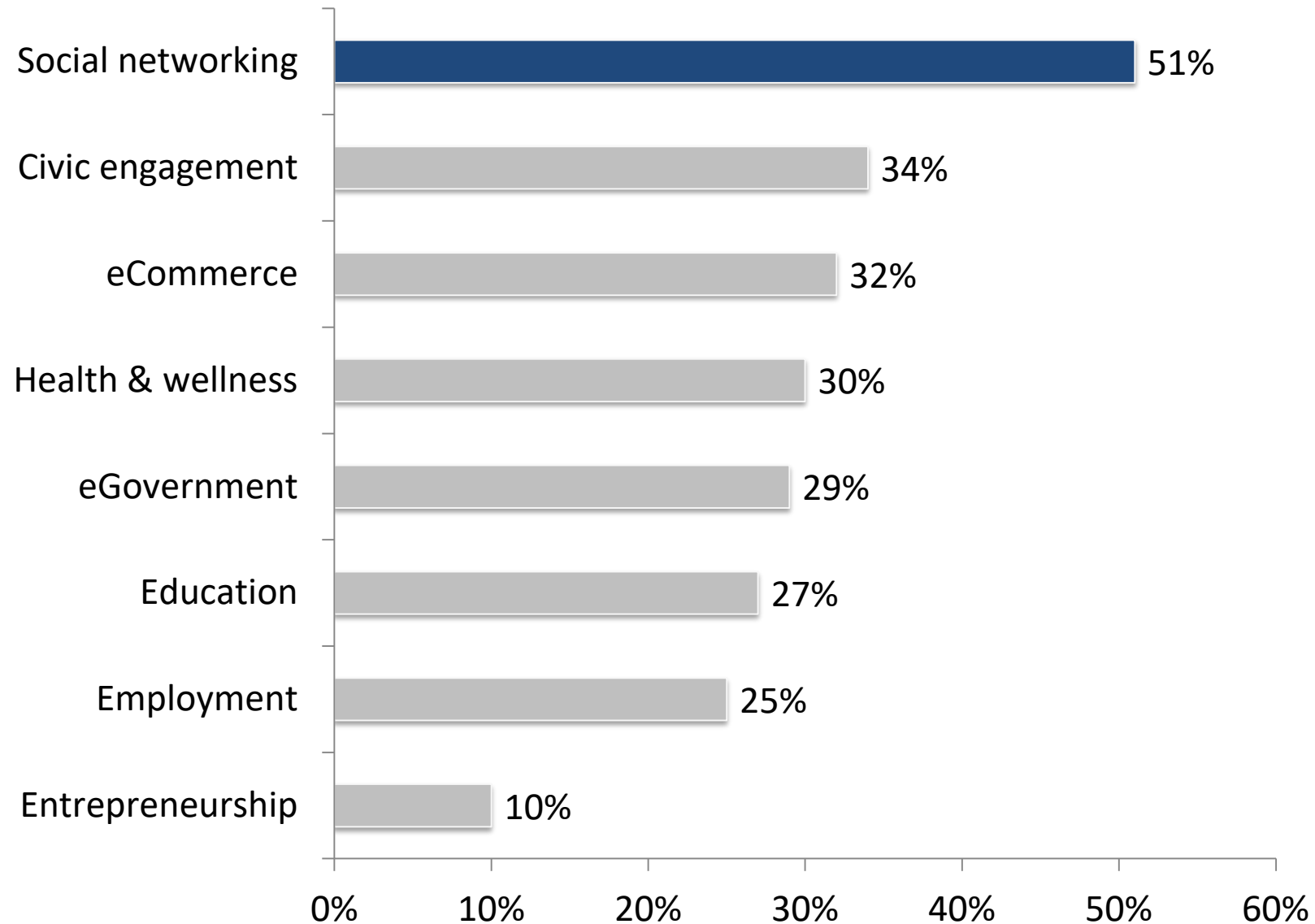
Chart 3.2: Percentage of Rock Creek Public Library patrons who used PACs for the following activities:



■ Education ■ Employment ■ Entrepreneurship ■ Health & wellness
■ eGovernment ■ Civic engagement ■ eCommerce ■ Social networking

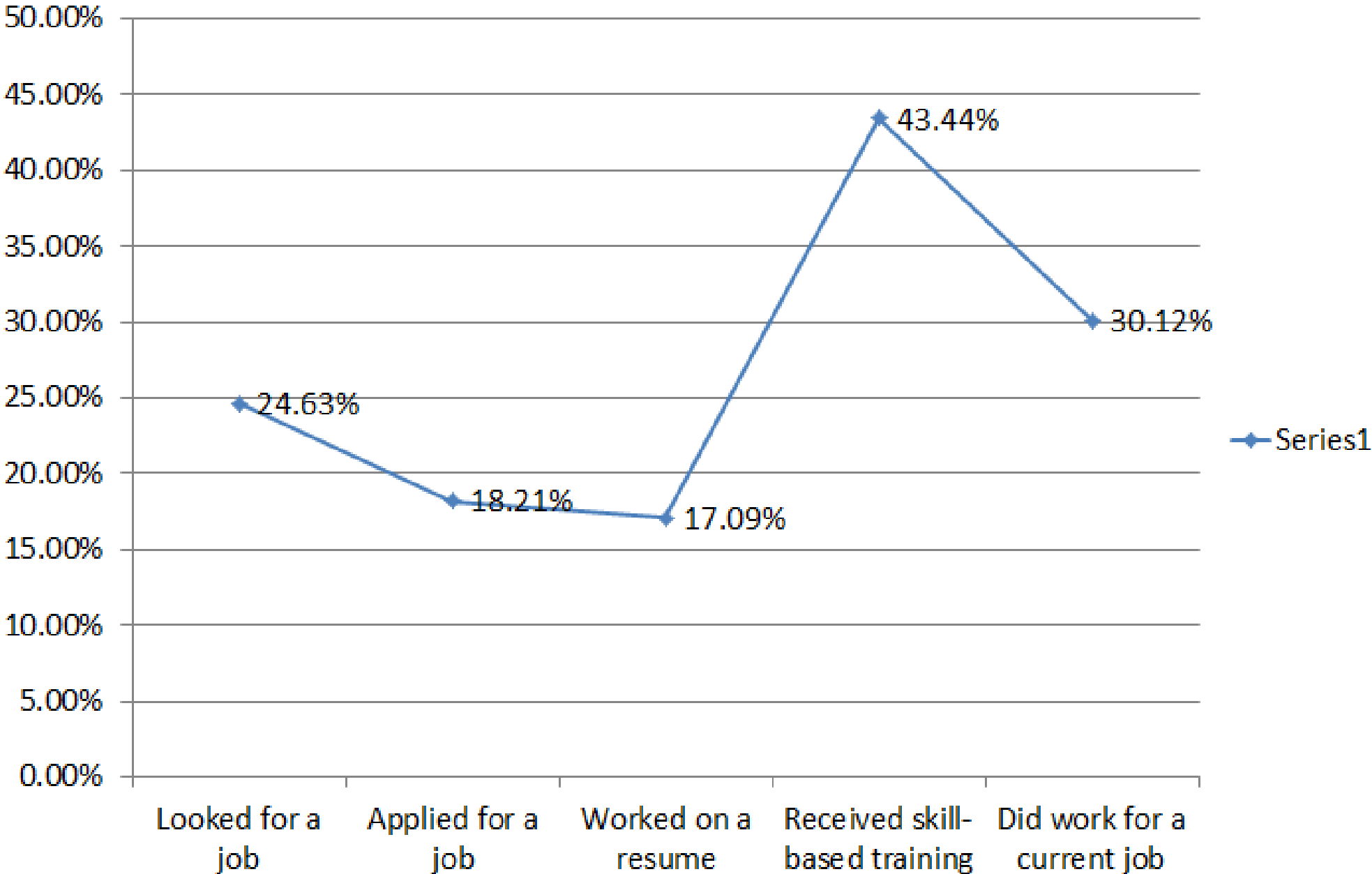


Using technology to stay in touch with family and friends and maintain social networks was the most popular activity on Rock Creek Public Library computers.



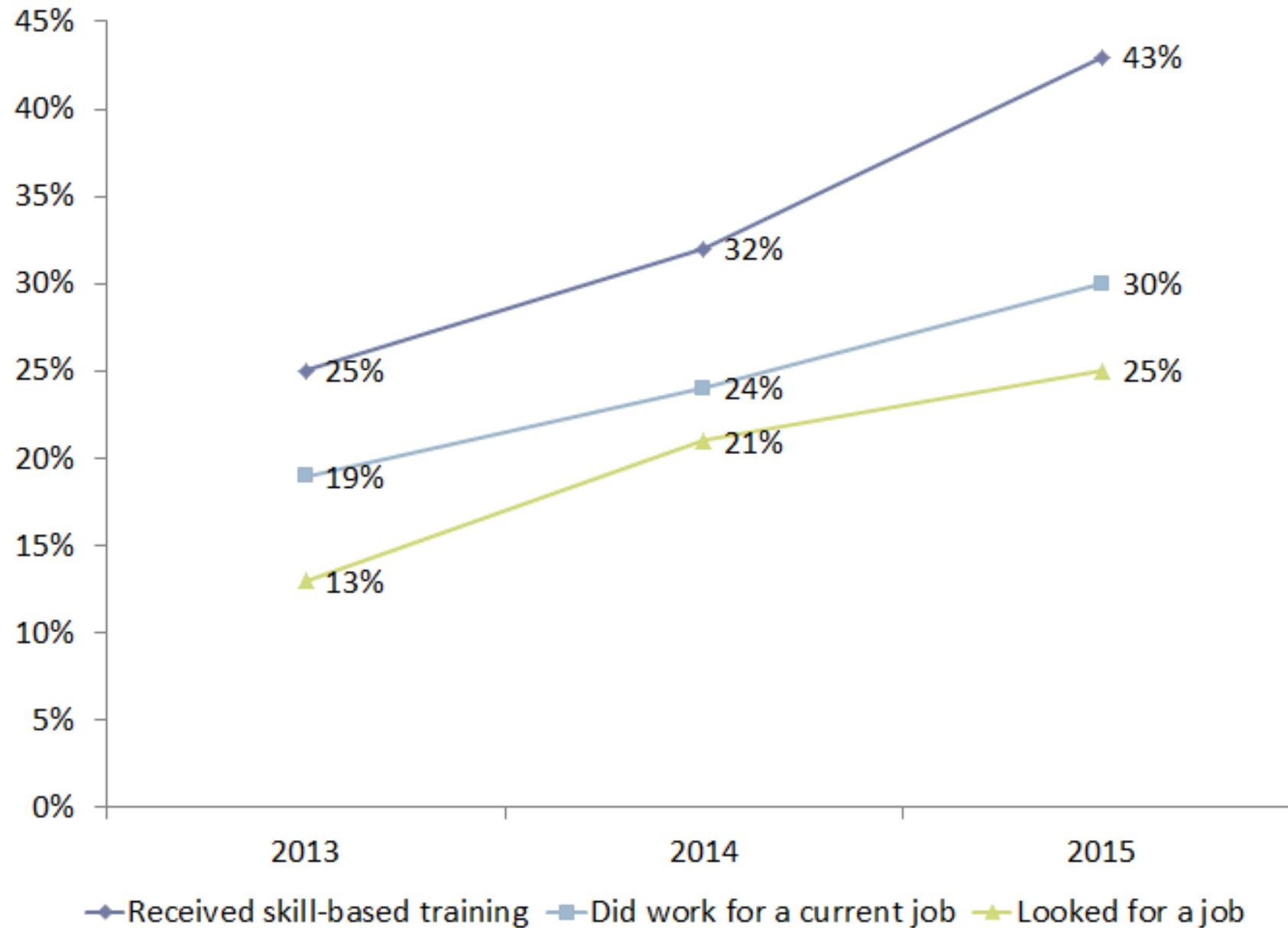


**Stony Brook Public Library:
Employment Tasks Patrons Completed Using Library Computers**



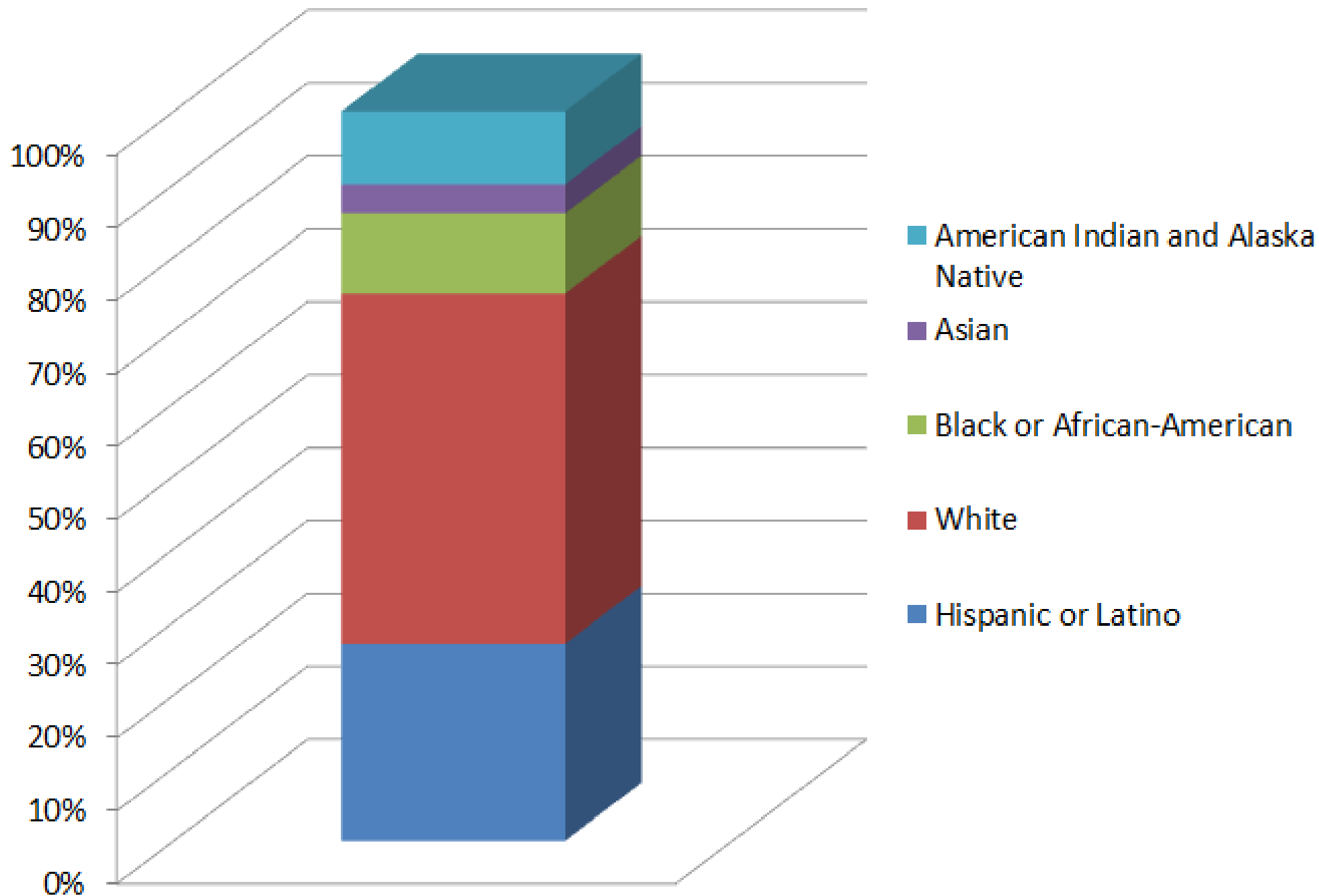


The percentages of Stony Brook Public Library computer users accomplishing work-related tasks have increased steadily since 2013.



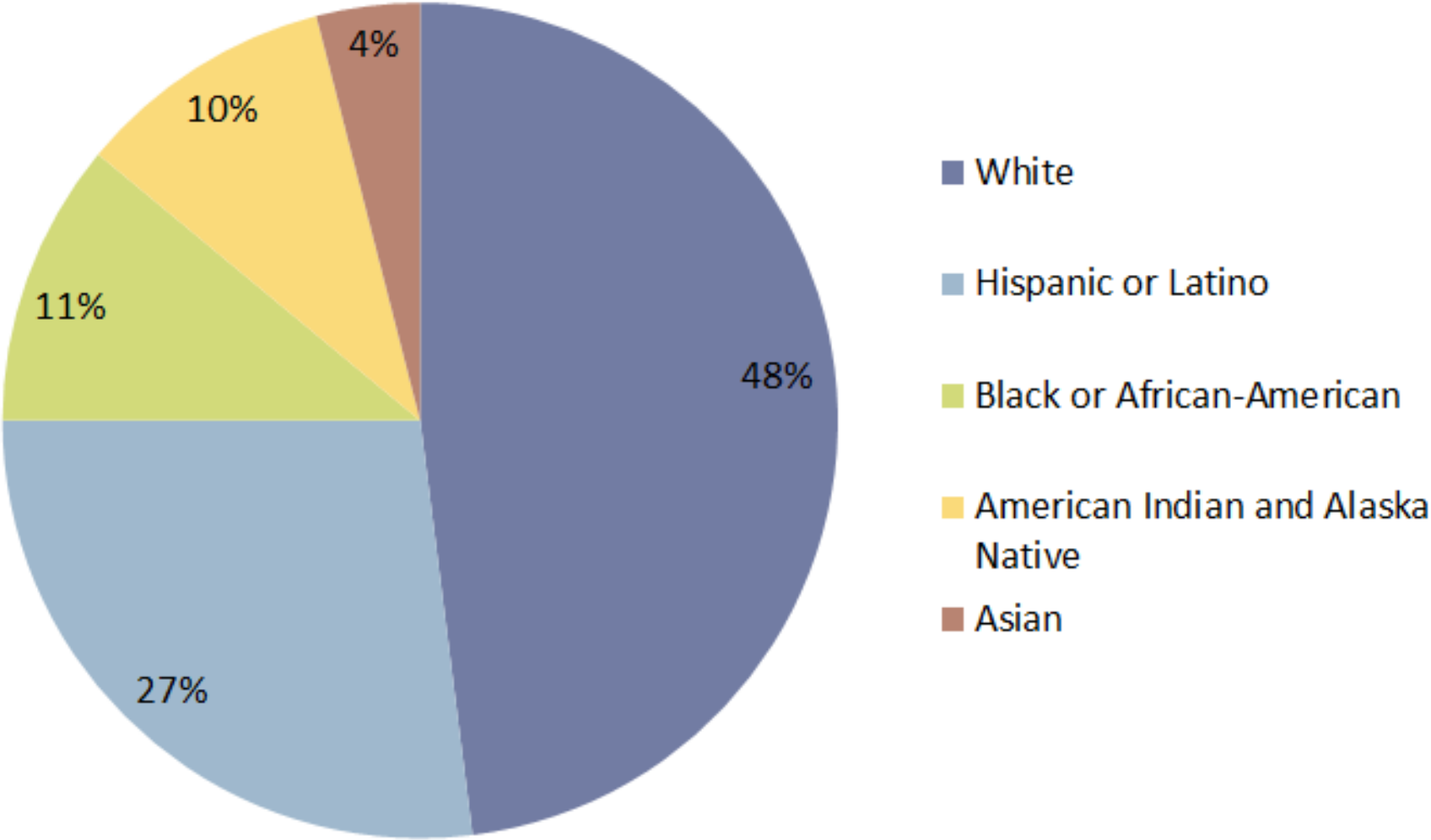


Percentage of Boulder Bay Public Library
Computer Users



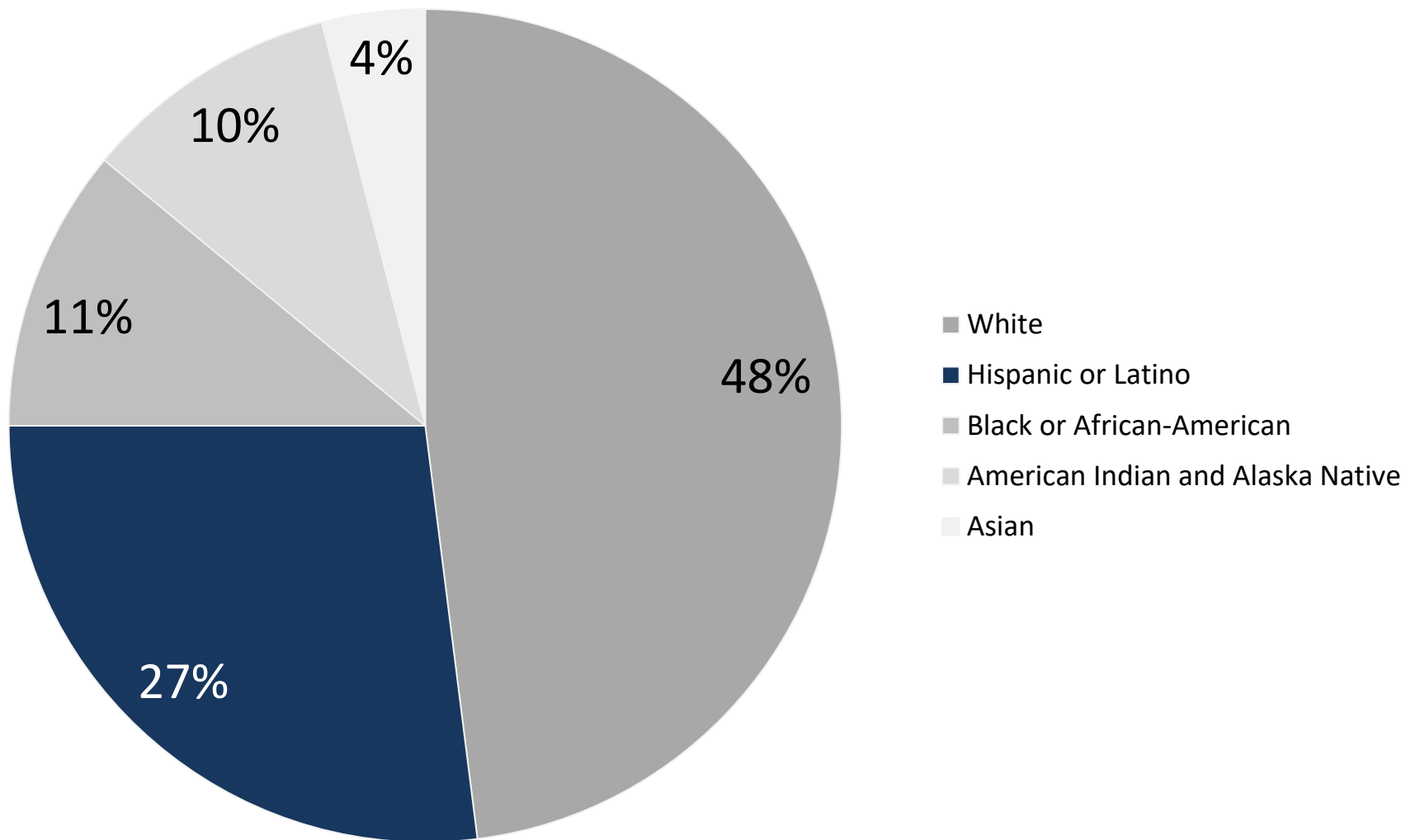


About half of Boulder Bay Public Library computer users are white, and more than 1 in 4 are Hispanic or Latino.



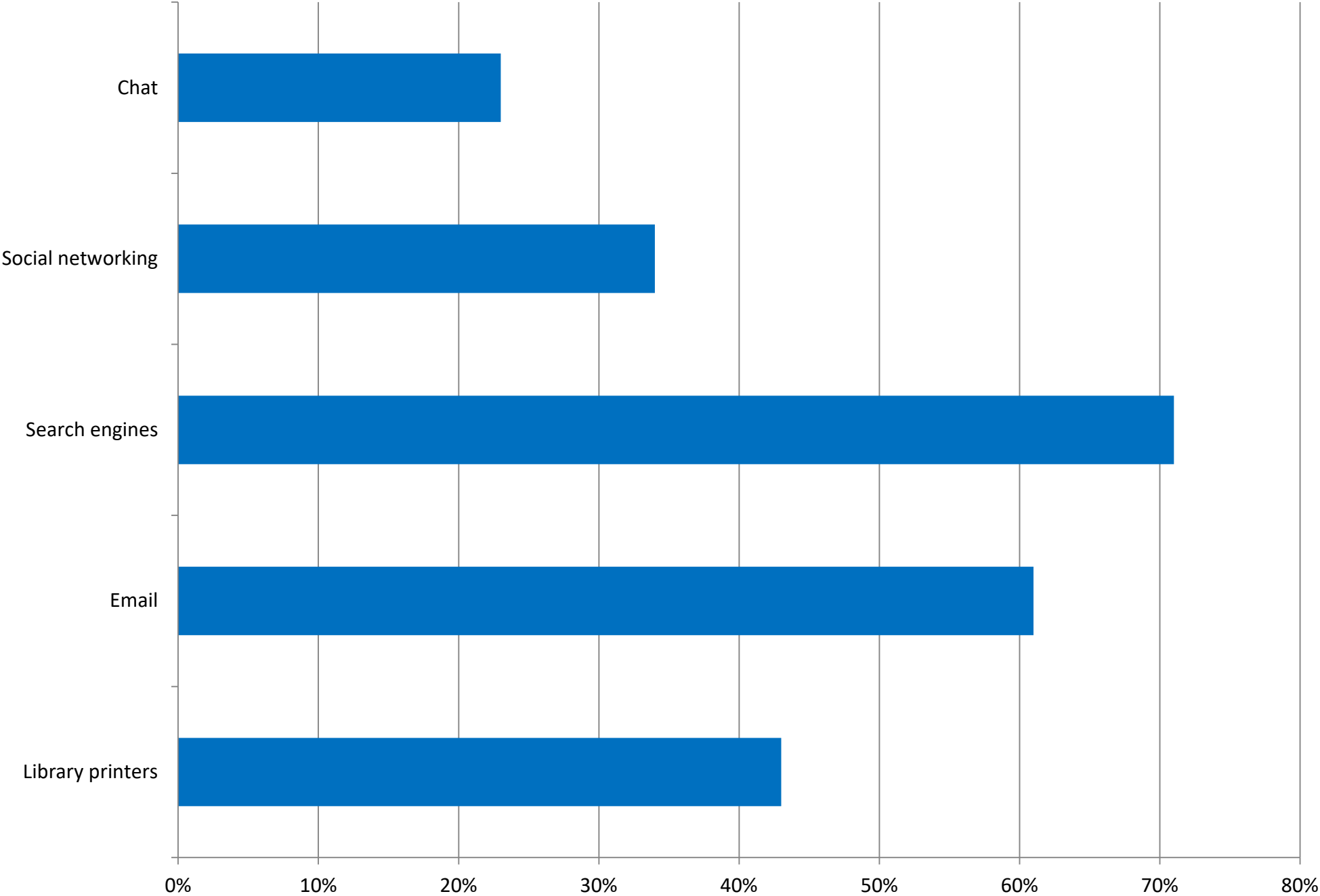


More than 1 in 4 Boulder Bay Public Library computer users are Hispanic or Latino.



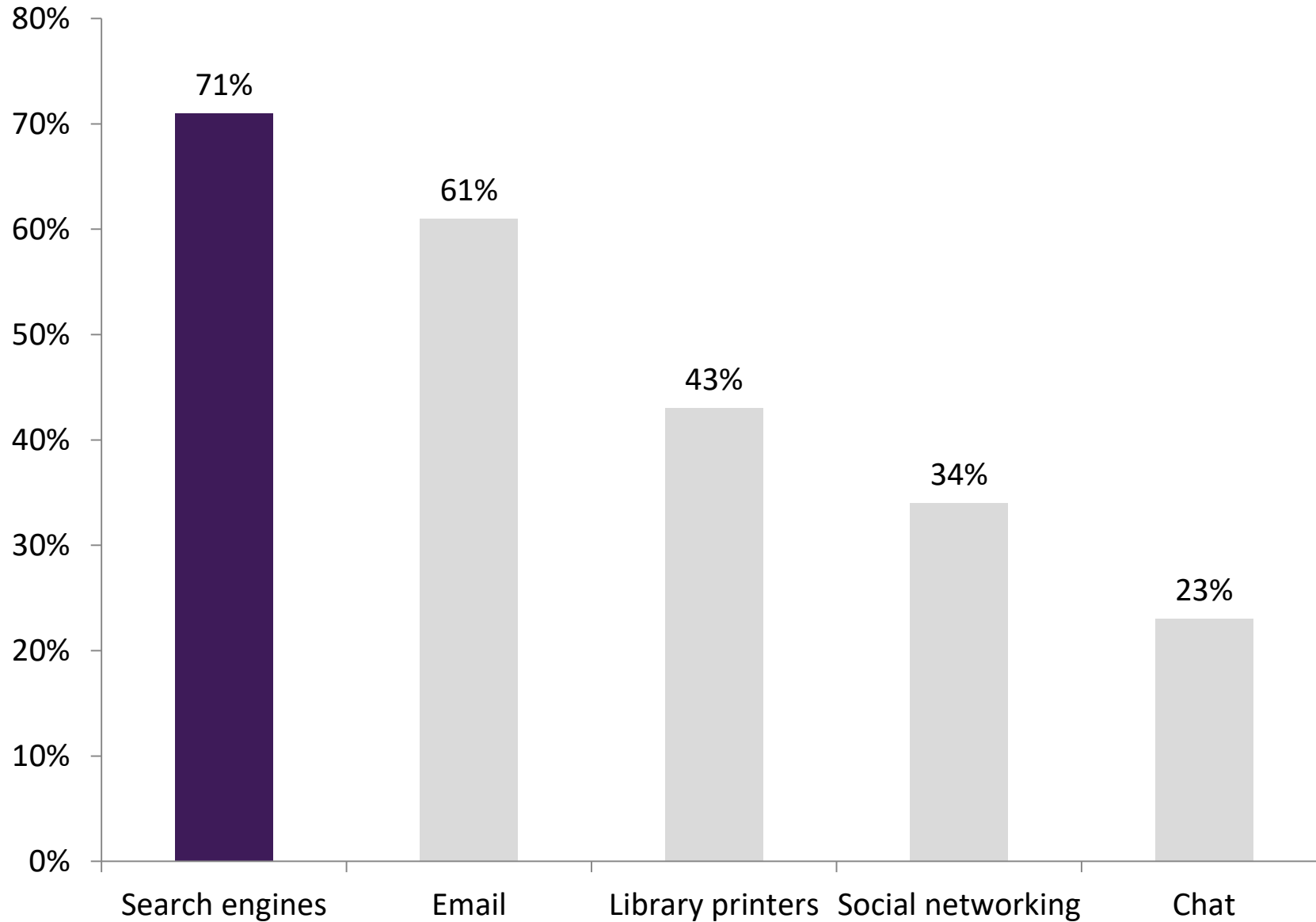


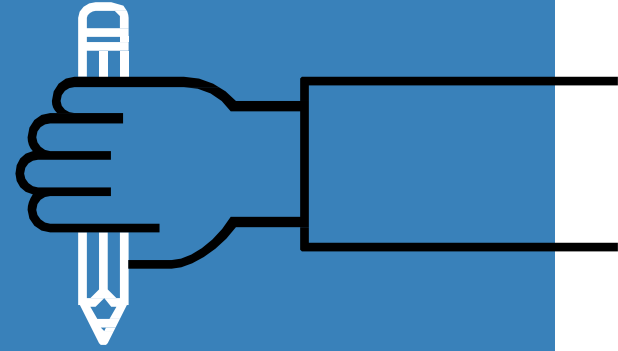
Patrons' Activities on Pebble Pond Public Library Computers



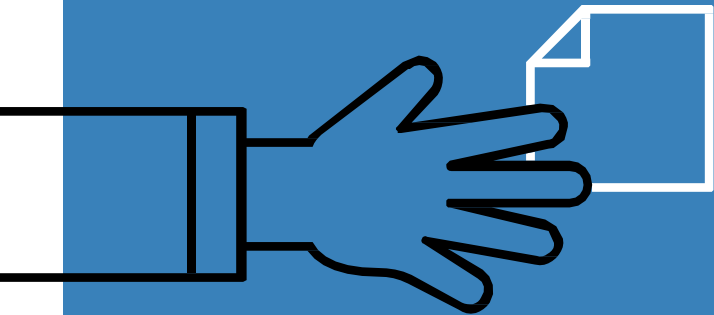


The most common web-based tool used by Pebble Pond Public Library patrons were search engines.





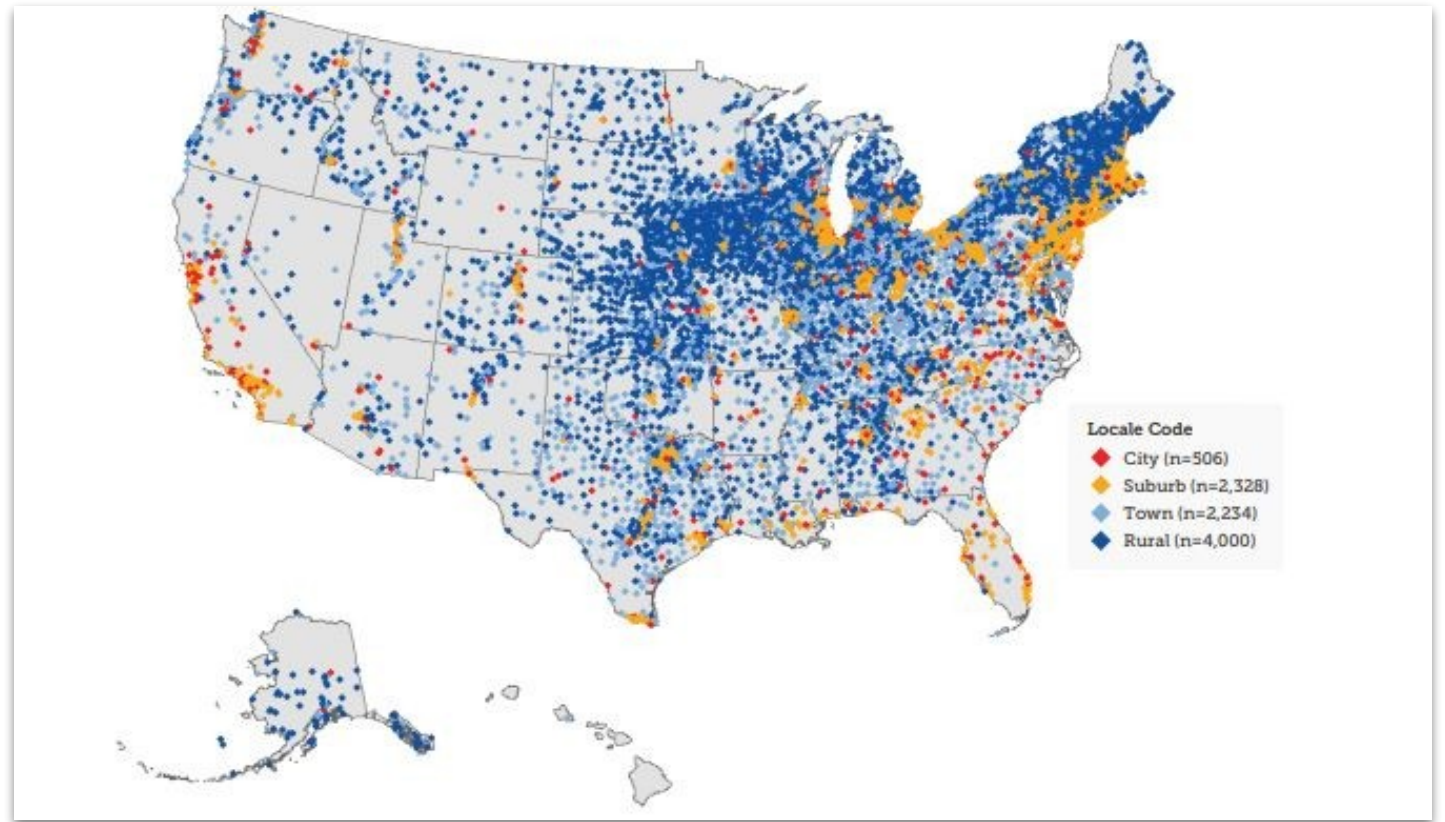
Design principles



Graphics: Show rather than tell



[Source](#)



[Source](#)

Font: Limit to three

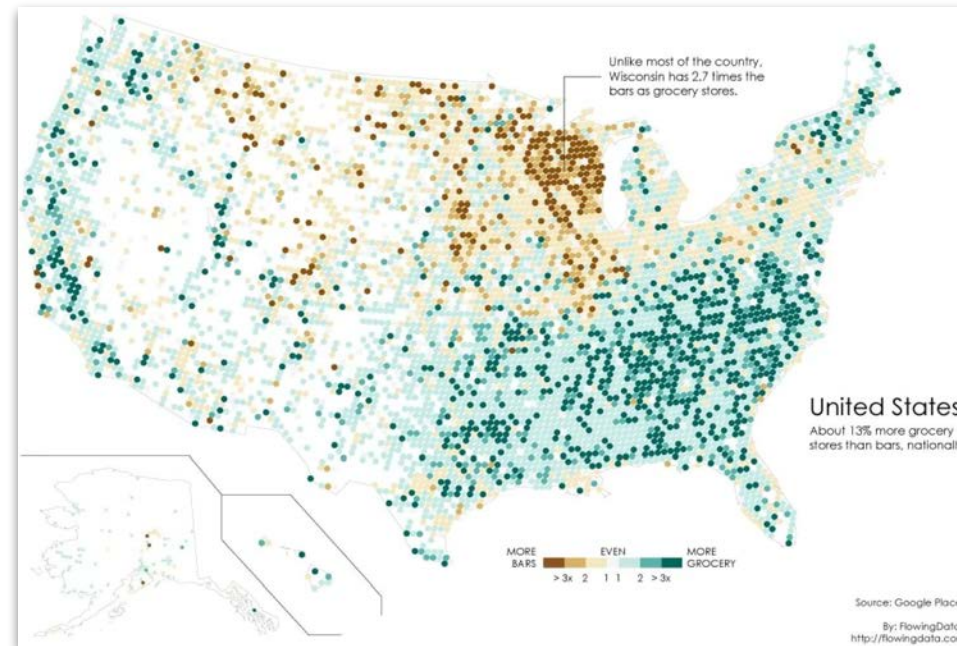
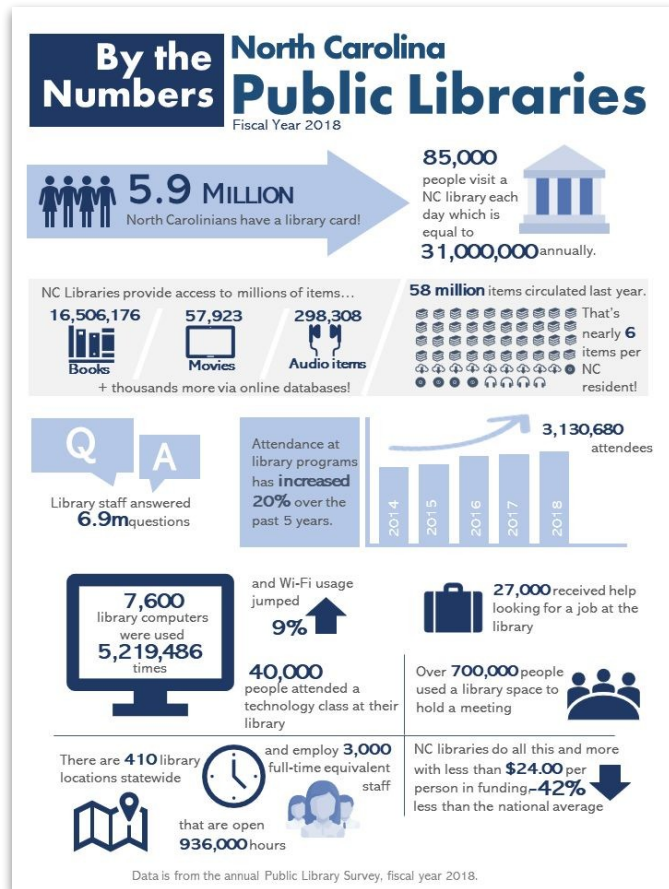


[Source](#)



[Source](#)

Colors: Grab attention



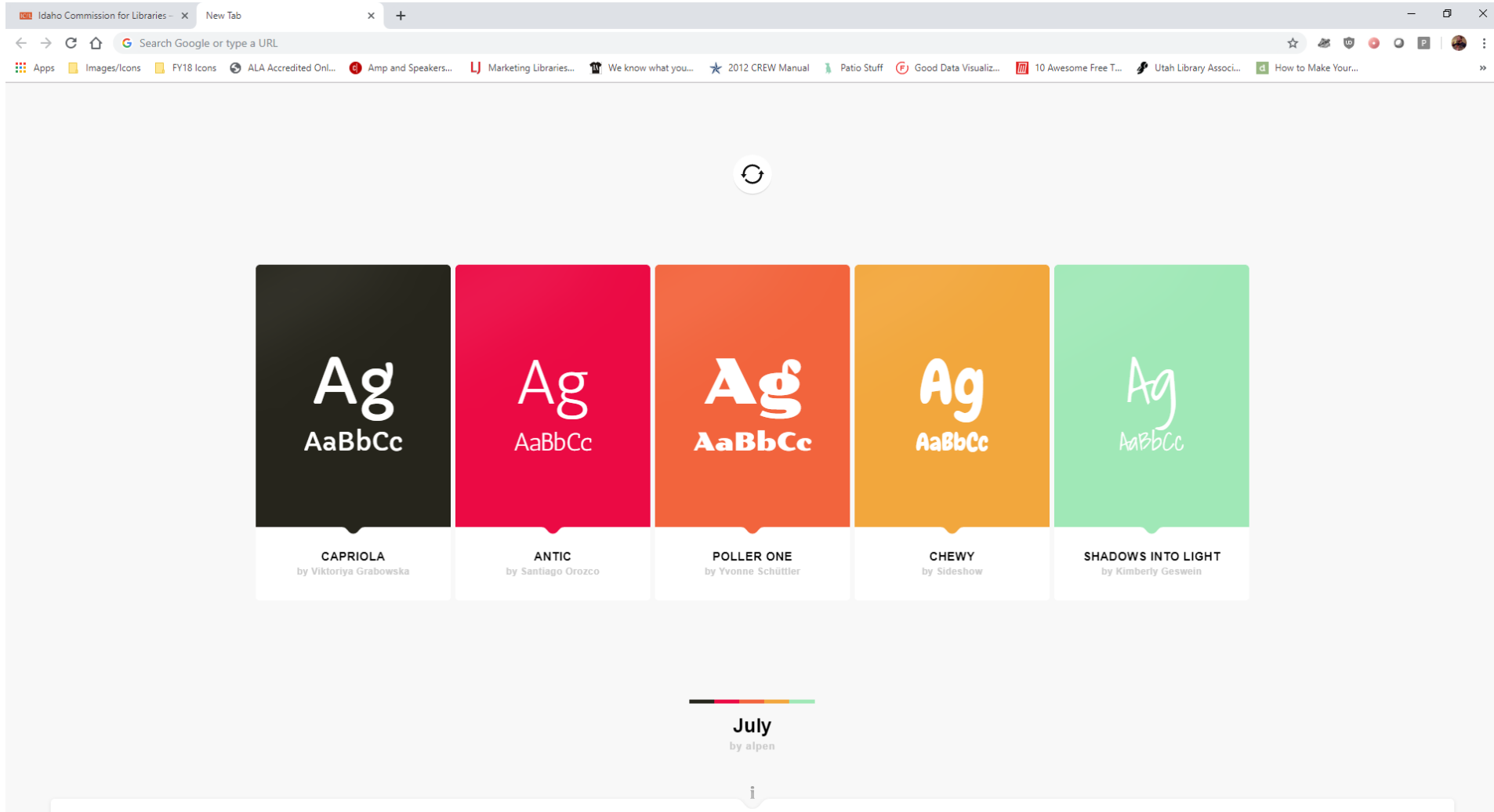
Source



Source

Source

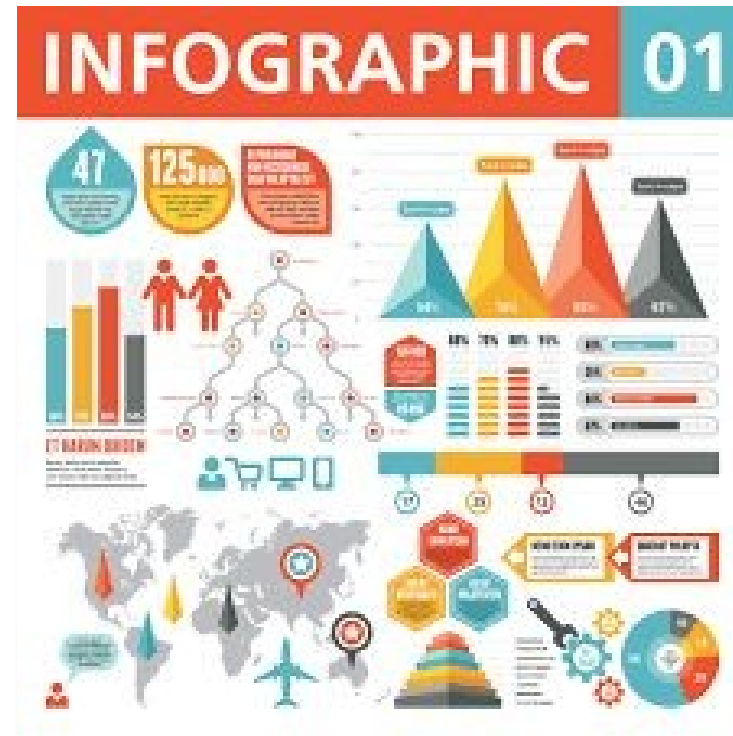
Font and color: Palettab



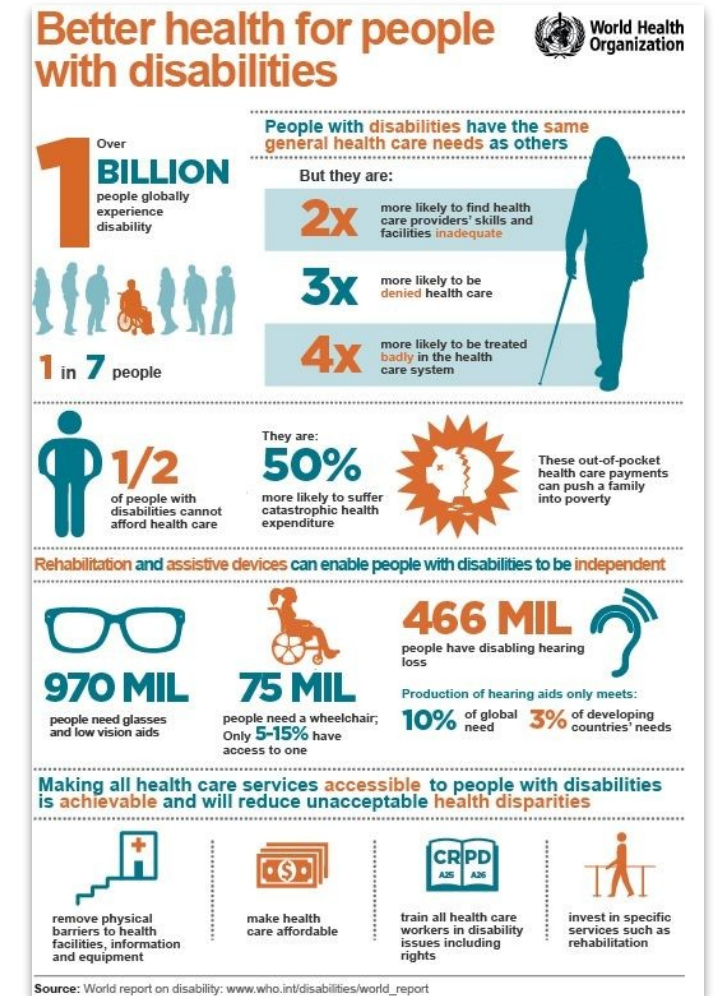
Arrangement: Visual organization



[Source](#)



[Source](#)



[Source](#)

Resources

Visualization tools:



Graphic design tools:



The

Best

of

2019

Total # of children's books
checked out = 3,100

Total # of adult books
checked out = 2,161

Family with the most
checkouts in 2019... Kevin
and Elise Hooper

A total of 4,350 people
came to the library this
year (and one goat!)

Thank You for
supporting our
library!!!


We added 953 items to the library
to be checked out this year.

Individual with most DVD
checkouts... Elizabeth Daniels

Idaho ranked #1 in the U.S. for
children's programs attendance
Idaho ranked #2 in the nation per
capita for circulation of children's
materials in public libraries!

Individual with most
checkouts... Keith Morgan





**A total of 4, 390 people
came to the library this
year (and one goat)**

The

Best

of

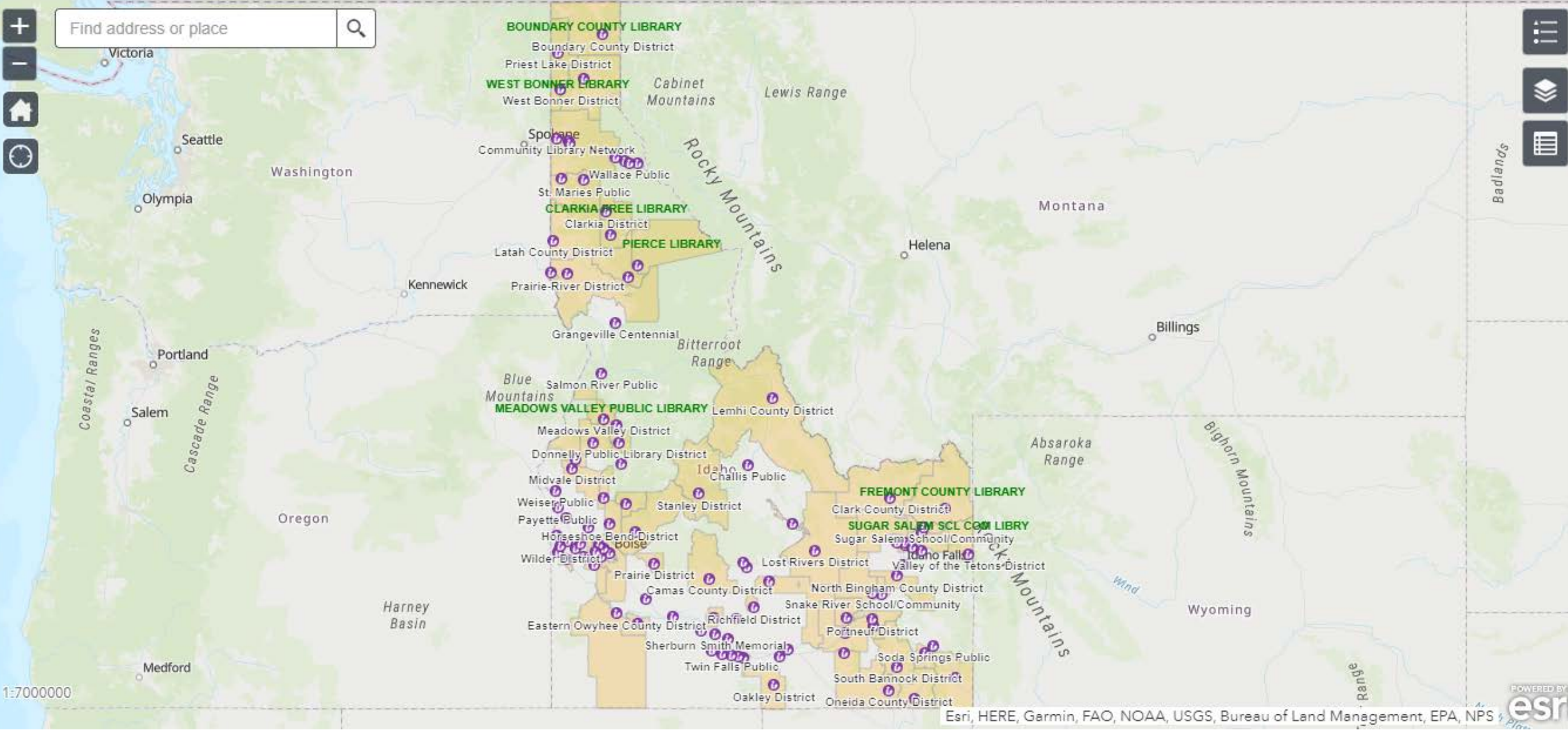
Total # of children's books
checked out = 3,100

Total # of adult books
checked out = 2,161

A total of 4,390 people
came to the library this

Thank You for

<https://bit.ly/2Q5NDDx>



1:7000000