

What's the Big IDEA?

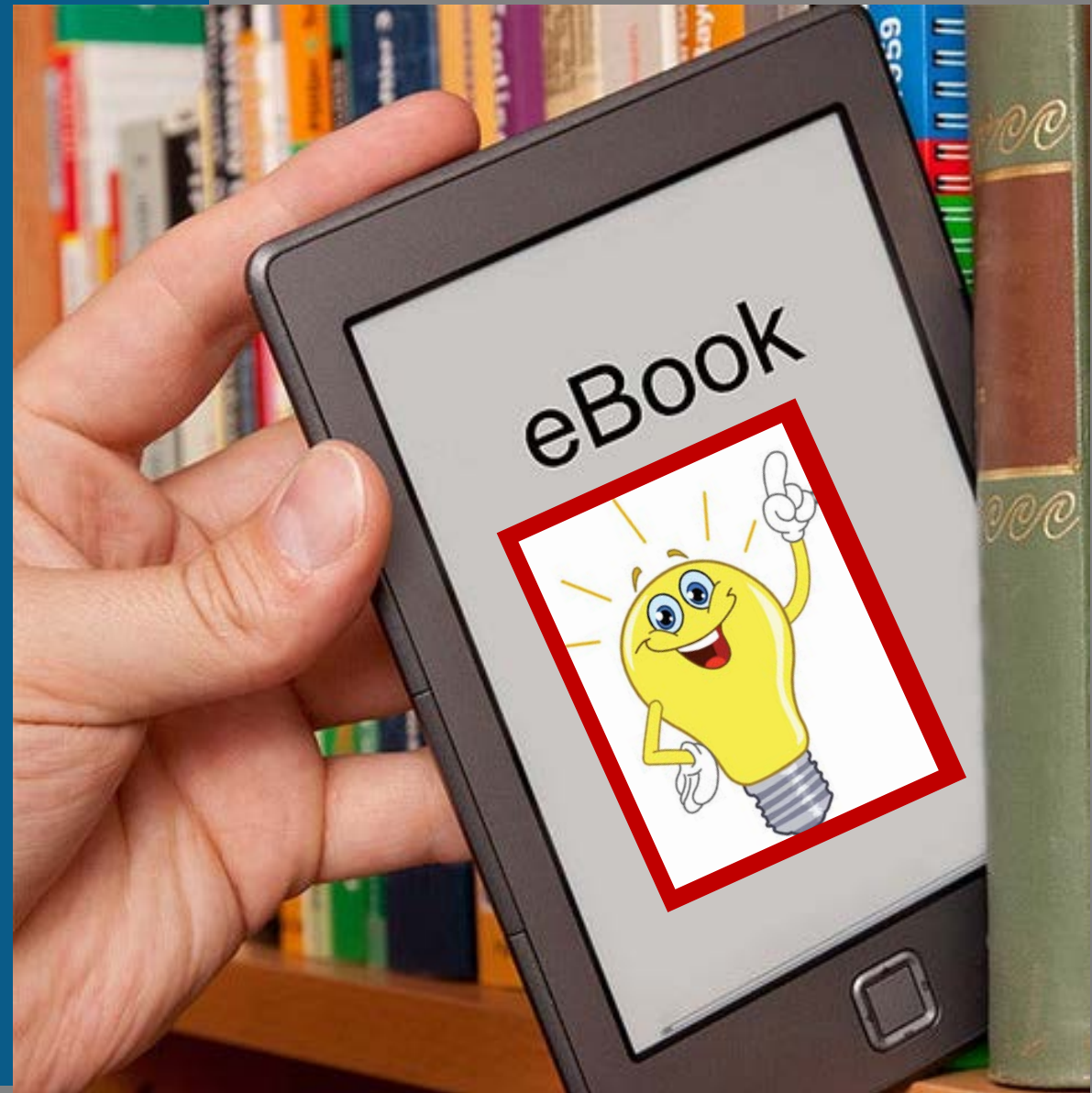
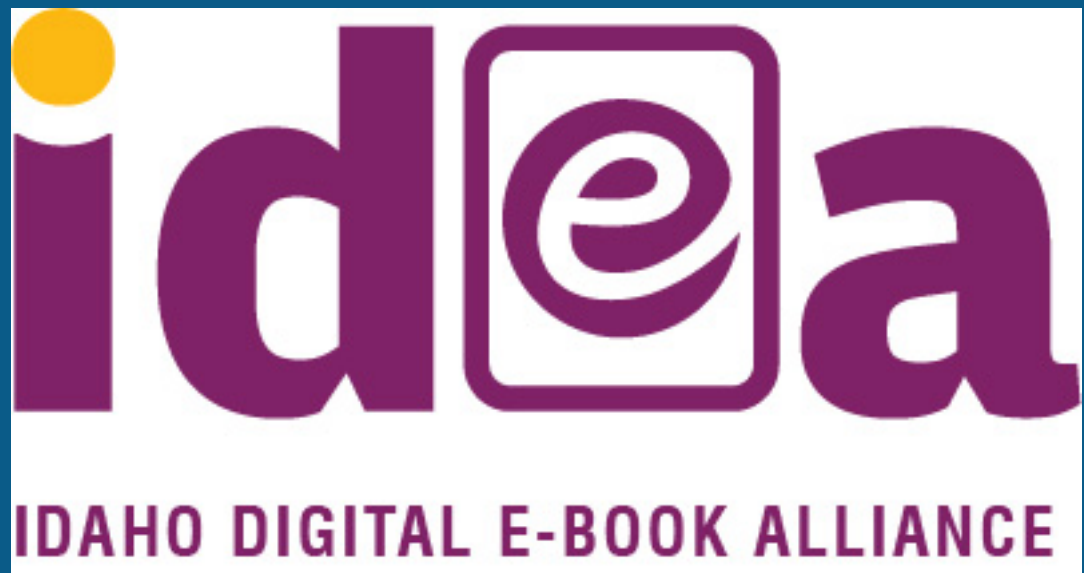


Image Credit by = <http://bit.ly/1jVLbfq>

Goal

Expanding e-book/e-audio access statewide with a sustainable supplemental plan



Overview of Current OverDrive Usage in Idaho

- 5 Consortia of Public Libraries
- 7 Standalone Public Libraries
- 20 Schools or School Districts



ideate
digital library

a joint service of eight southwest and south central Idaho libraries



Overview of Current OverDrive Usage in Idaho

Who is missing?

- 32 Public Libraries
- 600+ Public Schools
- 280,000 Idahoans not served by a Public Library



What we are unable to do:

- Have one collection that is easily accessible
- Have one collection that all libraries and Idahoans can access like LiLI
- Create a new consortium for the entire state dissolving existing ones
- Have a school library collection that is accessible to the rest of the state.



Image credit: <https://www.lorrainebosse-smith.com/one-size-never-fits/one-size-doesnt-fit-all/>

What we are able to do:

- Honor existing Overdrive consortia and usage
- Supplement existing collections
- Provide more reading materials for school-aged students
- Encourage schools to adopt the Sora App (at no cost to them), they can access a small free collection, the IDEA and perhaps their public library's collection
- Encourage 32 libraries to join an existing Consortium
- Provide e-books to Idahoans not living in a library district



The Plan:

Expanding e-book/e-audio access statewide with a sustainable supplemental plan

1. Invest at least \$200,000 this year on titles
2. Build an Alliance of existing OverDrive libraries to access this collection
3. Connect schools to the IDEA collection and perhaps their public library collections
4. Facilitate libraries with no Overdrive access to join a Consortium
5. Make the IDEA collection available to the 280,000 with no public library service, some also have limited school library access in these area



The Plan: Building the Alliance

Getting public libraries on board through Reciprocal Lending Agreements

Enrollment Form Reciprocal Lending Arrangement (RLA)

WHAT IS RLA?

Similar to physical inter-library loan, OverDrive's Reciprocal Lending Arrangement (RLA) program allows users with an eligible card at one library to borrow digital titles from other libraries participating in the same RLA group.

DISTINGUISHING HOME AND VISITORS

With RLA, a user with a library card to your library is called a "home user" and the same user visiting another library's digital collection is called a "visitor." Libraries participating in the RLA group will determine the level of access for visitors. For a consistent user experience, we highly recommend all libraries in the RLA group select the same settings for visitors.

PREFERENCES FOR VISITORS

Below, please indicate your RLA group's preferred settings for visitors:

1. Allow visitors to place holds Yes No
2. Allow visitors to recommend titles for purchase Yes No
3. Allow visitors to borrow titles that are Metered Access by checkout Yes No
4. Allow visitors to borrow titles that are Metered Access by the earlier of time or checkout Yes No
5. Allow visitors to borrow titles in the Cost Per Circ lending model Yes No

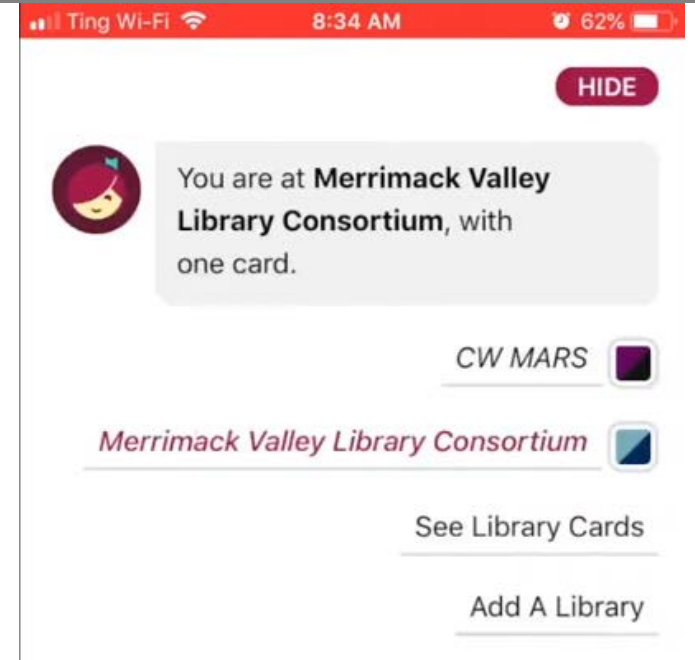
Visitors will not have access to Simultaneous Use content (including Magazine subscriptions).

TERMS AND CONDITIONS

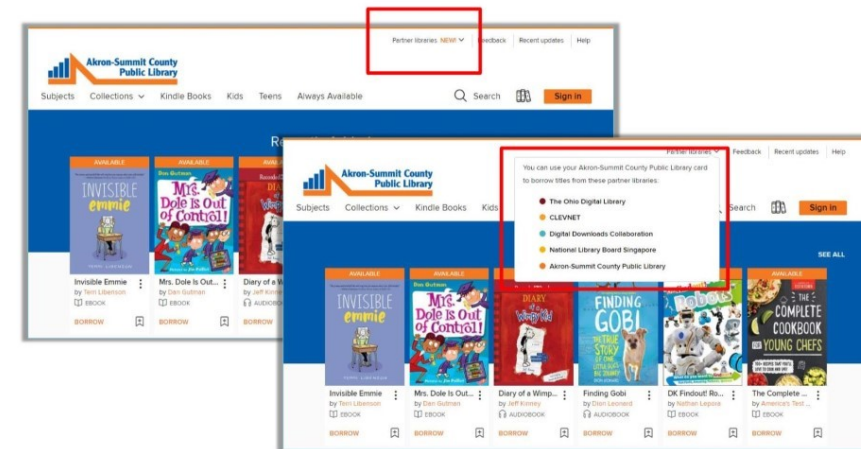
- To evaluate trends in RLA usage, libraries participating in RLA agree to share basic collection information, such as patron activity and collection size, with other libraries participating in the RLA group.
- Any or all of the RLA libraries listed below may terminate their participation in the RLA program for any reason by providing OverDrive and the other participating libraries at least thirty (30) days prior written notice.
- On behalf of your library, you agree to participate in the RLA based on the settings selected above. Please execute this Reciprocal Lending Arrangement Enrollment Form in the space provided below.

The Plan: Building the Alliance

Getting public libraries on board through Reciprocal Lending Agreements



Website updates - desktop



The Plan: Building the Alliance

Getting schools on board through Public Library Connect



Library Consent Form

LIBRARY INFORMATION

Name of Public Library/Participating Library/Consortium ("Library"):

OverDrive-Hosted Website URL: (ex: mylib.overdrive.com)

PRIMARY CONTACT

Name: Title:

Telephone: Email:

Public Library Connect (PLC) enables students in designated schools within the library's service area to directly access their OverDrive digital collection.

Terms and Conditions:

- The undersigned consents to allowing students from designated schools and/or school districts ("Participating School") to utilize student IDs or school or district sign on credentials to be authenticated and borrow Digital Content from the Library's OverDrive Digital Collection.
- Access for students using PLC is provided to the Library at no cost and does not require any Library integration or other ILS changes.
- Titles checked out by students using PLC will be reported in the Library's Marketplace Checkout report under "Borrowed from: Sora."
- Participating Schools using PLC shall be limited to schools or districts within Library's legal service area and are subject to OverDrive approval. Each Participating School shall execute a consent form to agree to the terms of Library's service agreement with OverDrive.
- The term of PLC shall run concurrent with the Library's OverDrive agreement. In the event of termination or expiration of Library's OverDrive agreement, Participating Schools will no longer have access to PLC.

Sign us up!

On behalf of Library, my signature below indicates acceptance of the above Terms and Conditions, as well as authority for my library to enter into this agreement.

By: (signature) Title:

Name: (Print) Date:

Please complete this consent form and email to connect@overdrive.com or return by fax to +1 216-573-6889.



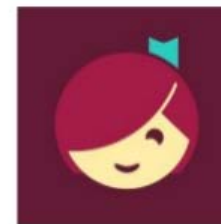
One OverDrive Way, Cleveland, OH 44125 • P: 1+ 216-573-6886 F: 1+ 216-573-6889

The Plan: Building the Alliance

Access

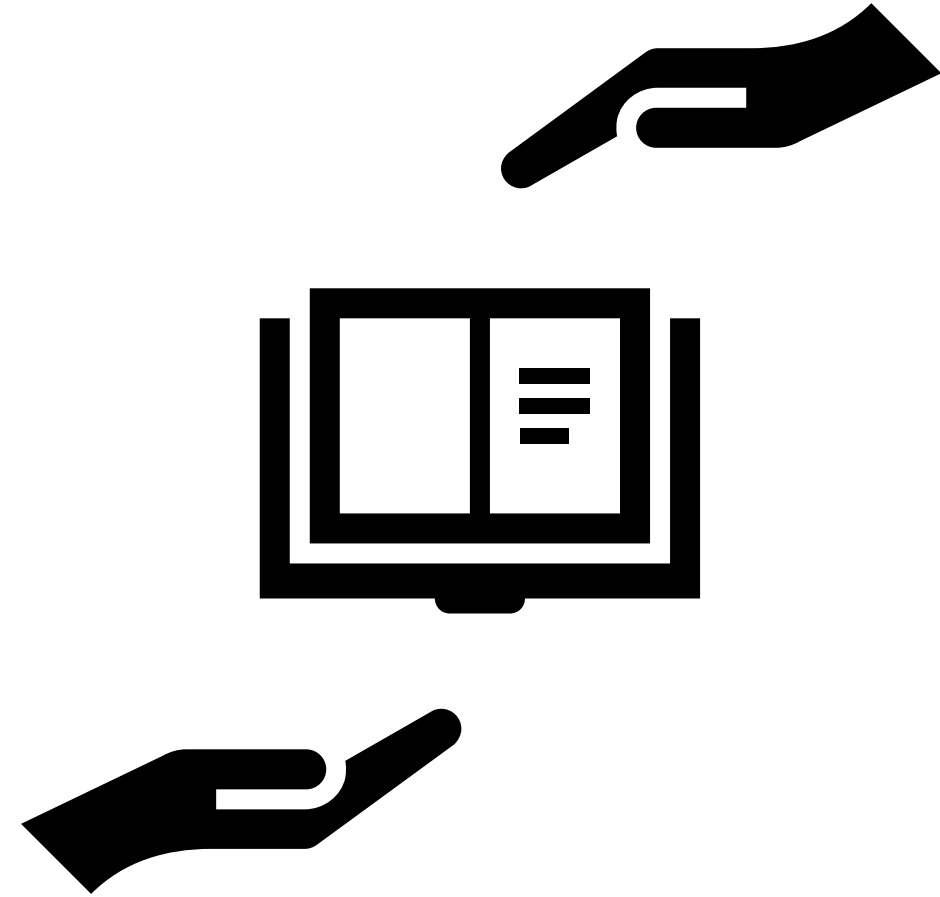
- Computer vs Mobile Device
- Libby vs Sora

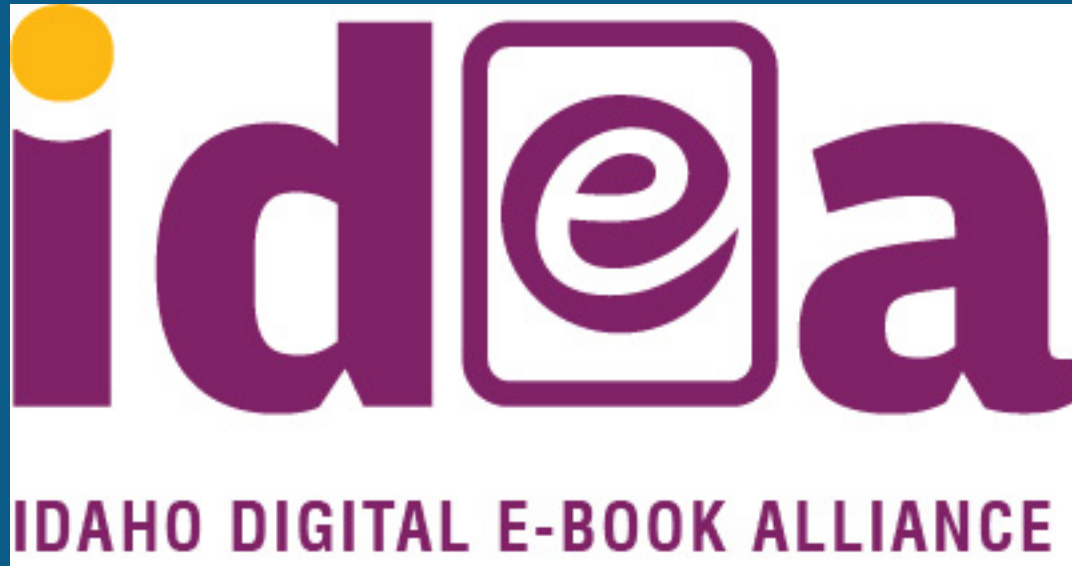
OverDrive, Libby, and Sora



The Plan: Building the Alliance

Getting libraries with
no OverDrive access
on board with an
existing consortium





<https://libraries.idaho.gov/idea/>

Contact Dylan or Tammy with questions or comments.

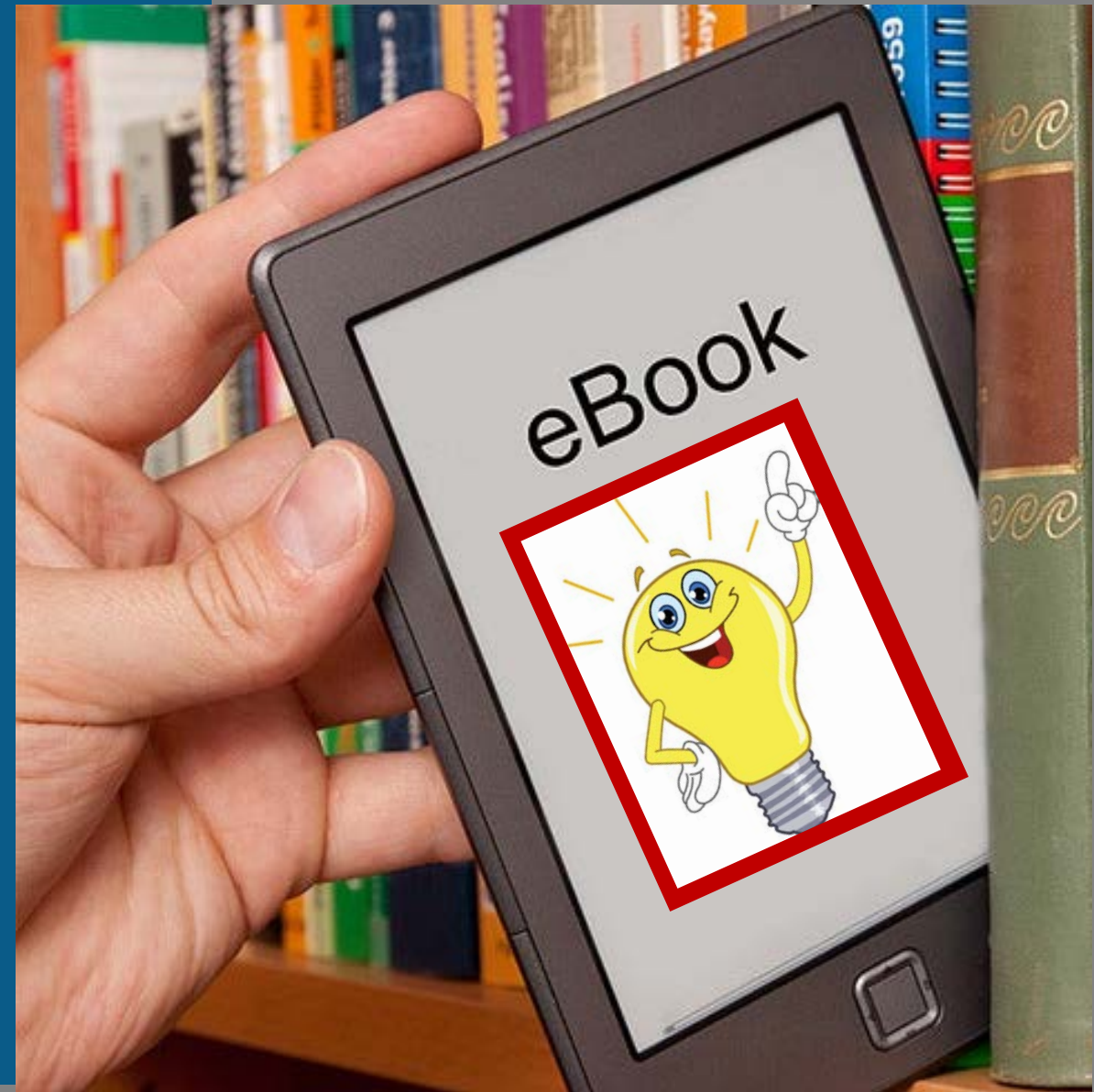


Image Credit by = <http://bit.ly/1jVLbfq>