



ICfL and ILA: Who Does What and How They Can Help You



Thursday, October 8, 2020

idaho commission for libraries (ICfL)



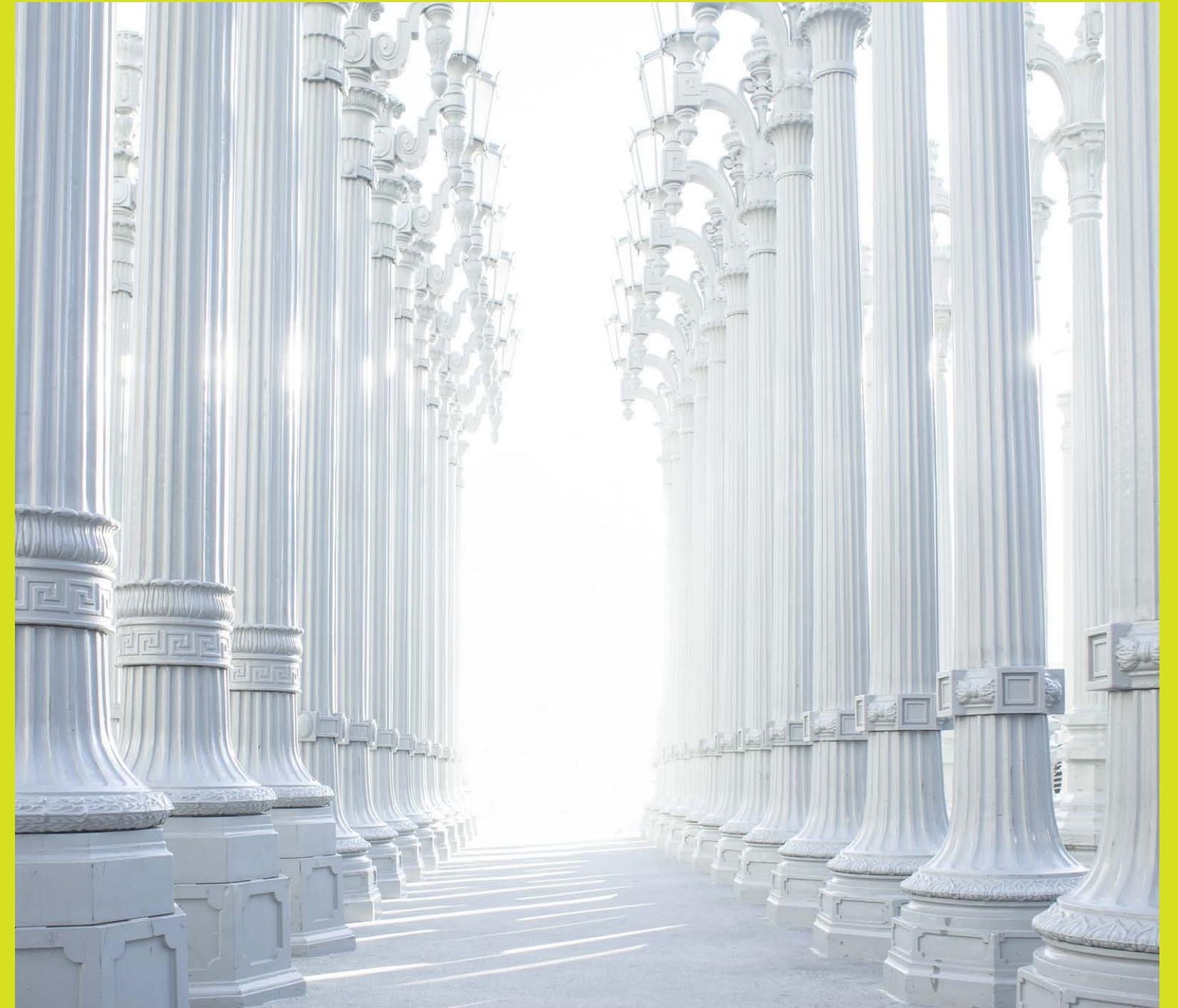
idaho library association (ILA)



Question 1

The Idaho Commission for Libraries (ICfL) is a:

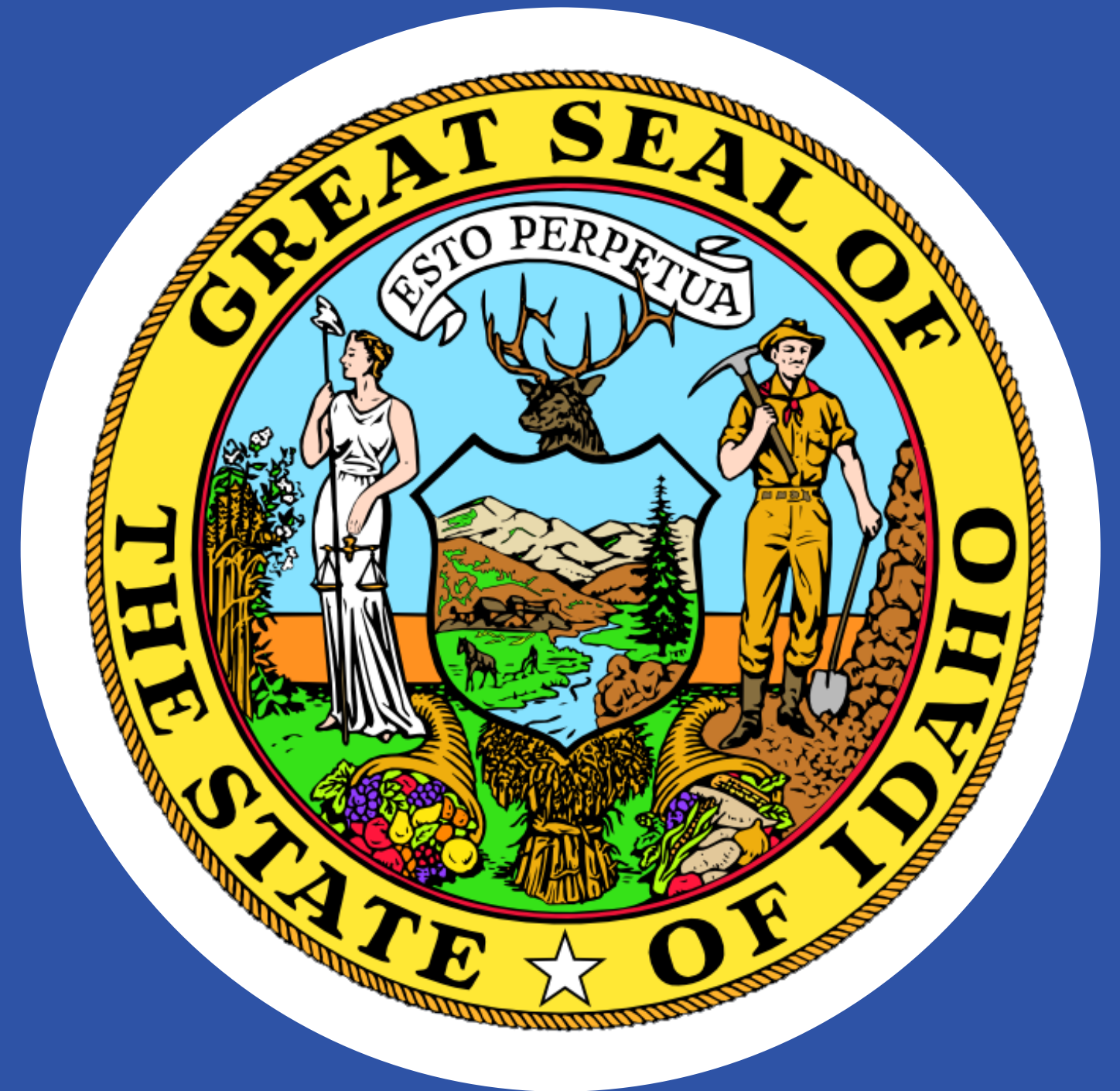
- A.
- B.
- C.
- D.



Question 1

The Idaho Commission for Libraries (ICfL) is a:

- A.
- B.
- C. ✓
- D.



Question 2

The Idaho Library Association (ILA) is a:

- A.
- B.
- C.
- D.



Question 2

The Idaho Library Association (ILA) is a:

A. member organization



B. grocery store

C. bookmobile

D. city department



Question 3

Which is older -- the ICfL or the ILA?

ICfL

A.

ILA

B.

Question 3

Which is older -- the ICfL or the ILA?



ICfL

A.



ILA

B.

Question 3



The **ICfL**, then the Idaho State Library, was established by legislation on **April 1, 1901**, with an annual budget of \$3,000.

The Idaho State Library Association was organized on December 29, 1915.

Question 4

How much are ILA's annual membership dues?

- A.
- B.
- C.
- D.



Question 4

How much are ILA's annual membership dues?

- A.
- B.
- C.
- D. 

You can be an annual "contributor" to ILA for \$20 per year through the pay-what-you-can membership.

<http://www.idaholibraries.org/Membership>

In November 1950, the Idaho State Library Association was reorganized. At that time, dues were set in graduated levels ranging from \$1 - \$3.

Its original membership consisted of 13 individuals & 1 institution (Boise Carnegie Library).

Question 5

As a state agency, which activities are the ICfL NOT allowed to perform?

- A. Lobbying.
- B. Using LSTA funds for construction projects.
- C. Providing legal advice to library staff or boards.
- D. Distributing Jell-O shots at staff functions.
- E. All of the above.



Question 5

As a state agency, which activities are the ICfL NOT allowed to perform?

- A.
- B.
- C.
- D.
- E.



Question 6

Which organization provides financial support for formal education of library staff?

ICfL
A.

ILA
B.

Both
C.

Question 6

Which organization provides financial support for formal education of library staff?

ICfL
A.

ILA
B.

Both
C.



Question 6



I CfL -- has grants available

I LA -- has scholarships
available

Question 7

As a member organization,
which is NOT part of the
ILA mission?

- A. Creating networking opportunities for librarians.
- B. Hosting library -related professional development activities across the state.
- C. Providing babysitting services for Idaho library staff.
- D. Maintaining relationships with state politicians & policy-makers.



Question 7

As a member organization,
which is NOT part of the
ILA mission?

A. Creating networking
opportunities for librarians.

B. Hosting library -related
professional development
activities across the state.

C. Providing babysitting services
for Idaho library staff.

D. Maintaining relationships with
state politicians & policy-
makers.



Question 8

Which program/initiative is NOT one of the ICfL's?

A.

The PDQ.

B.

The Libraries Linking Idaho (LiLI) databases.

C.

The STACKS repository.

D.

The Idaho Talking Book Service (TBS).



Question 8

Which program/initiative is NOT one of the ICfL's?

A. The PDQ.
(pretty darn quiet)

B. The Libraries Linking Idaho
(LiLI) databases.

C. The STACKS repository.

D. The Idaho Talking Book
Service (TBS).



*That acronym
was already
taken.*



Question 9

What cool new thing is the ICfL rolling out this week?

A.

A bakery.

B.

A statewide e -book service.

C.

Babysitting services for Idaho library staff.



HINT: IT'S A GREAT IDEA.

Question 9

What cool new thing is the ICfL rolling out this week?

A.

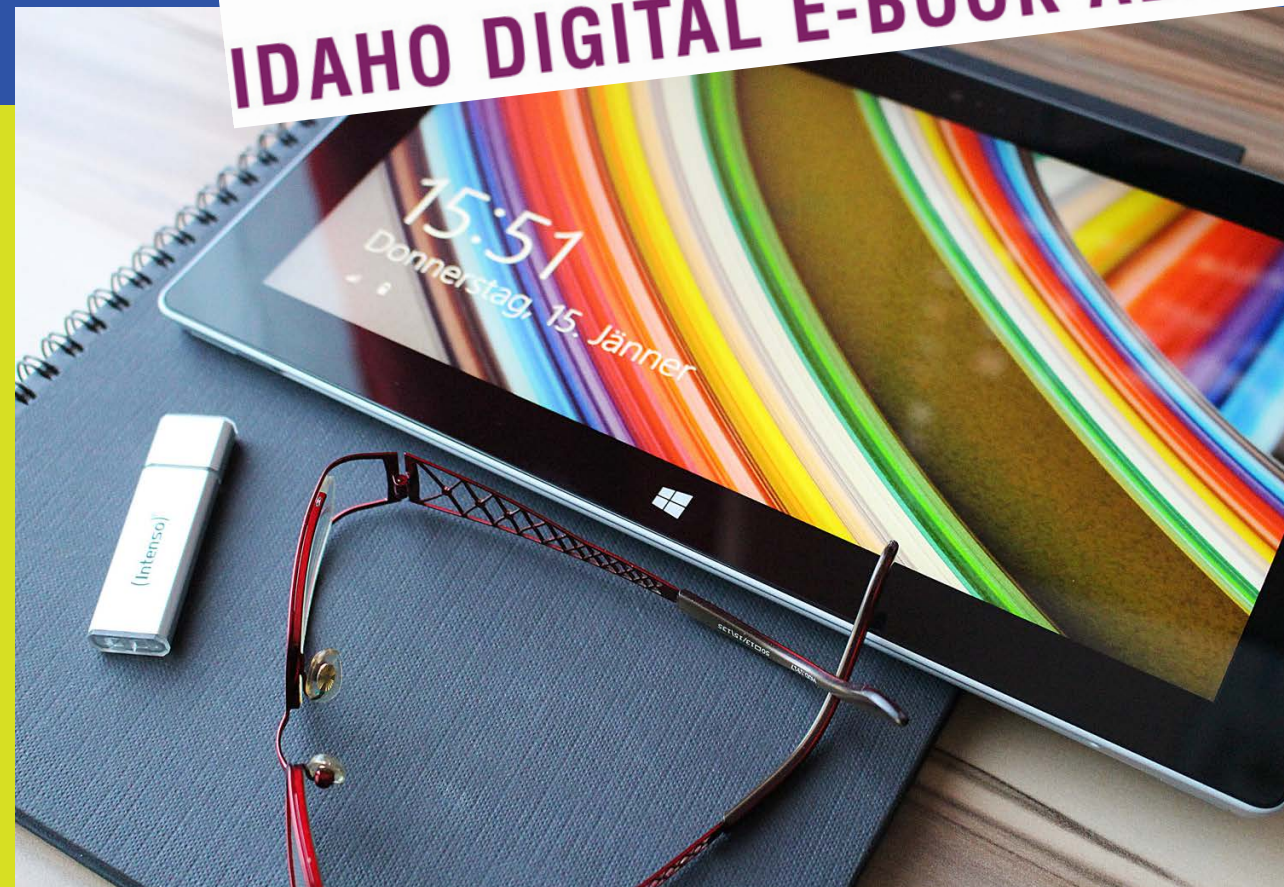
A bakery.

B.

A statewide e-book service.

C.

Babysitting services for Idaho library staff.



Question 10

How many Idahoans have a public library card? *

A .

890,519

B .

983,127

C .

1,093,223



*Source: 2019 State of Idaho
Public Library Statistics

Question 10

How many Idahoans have a public library card? *

A.

890,519

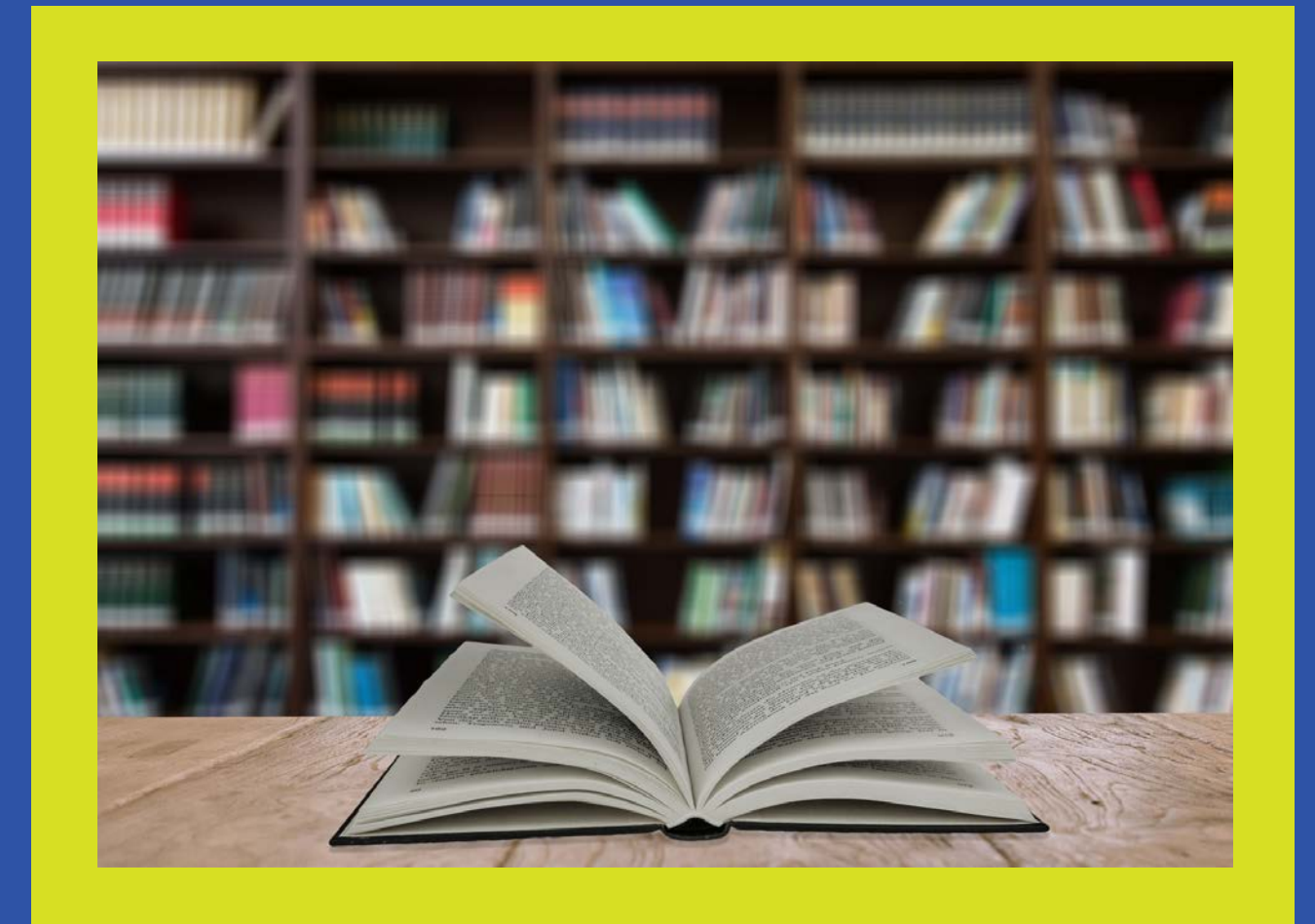


B.

983,127

C.

1,093,223



*Source: 2019 State of Idaho
Public Library Statistics

Lightning Round

Name the organization
most known for:

Starting meetings off with ground rules
and ending with a Plus/Delta.

ICfL

ILA



Lightning Round

Name the organization
most known for:



Starting meetings off with ground rules
and ending with a Plus/Delta.

ICfL



ILA

Lightning Round

Name the organization
most known for:

Awesome annual and regional
conferences.

ICfL

ILA



Lightning Round

Name the organization
most known for:

Awesome annual and regional
conferences.

ICfL

ILA



Lightning Round

Name the organization
most known for:

E-rate support.

ICfL

ILA



Lightning Round

Name the organization
most known for:

E-rate support.

ICfL



ILA



Lightning Round

Name the organization
most known for:



ICfL

ILA

Lightning Round

Name the organization
most known for:



ICfL



ILA



Lightning Round

Name the organization
most known for:

The Libidaho listserv.

I C f L

I L A



Lightning Round

Name the organization
most known for:

The Libidaho listserv.

I C fL

I LA



Lightning Round

Name the organization
most known for:

"The Scoop."

ICfL

ILA



Lightning Round

Name the organization
most known for:

"The Scoop."

ICfL



ILA



Lightning Round

Name the organization
most known for:

The Idaho Talking Book Service (TBS).

I C f L

I L A



Lightning Round

Name the organization
most known for:



The Idaho Talking Book Service (TBS).

I C fL



I LA

Lightning Round

Name the organization
most known for:

The Book of the Year award.

ICfL

ILA



Lightning Round

Name the organization
most known for:

The Book of the Year award.

ICfL

ILA



Lightning Round

Name the organization
most known for:

Info to Go webinars.

ICfL

ILA



Lightning Round

Name the organization
most known for:

Info to Go webinars.

ICfL



ILA



What are other **LIBRARY**
membership organizations
that support librarians?



What are other **LIBRARY**
membership organizations
that support librarians?



ALA, PNLA, PLA, ALSC,
ARSL

Who is the new **PRESIDENT** of ILA?



IDAHO LIBRARY ASSOCIATION



Who is the new **PRESIDENT** of ILA?

Amy Campbell

Public Services Supervisor
Marshall Public, Pocatello

serving until Oct. 2022



Who else is on the ILA



BOARD ?

Who else is on the ILA BOARD ?

Vice President -- Erin Downey (2019-2021)

Treasurer -- Gretchen Casserotti (2020-2023)

Secretary -- Jennifer Redford (2019-2022)

Membership Engagement Chair -- Mary DeWalt
(2019-2022)

Director-At-Large -- Lynn Johnson, Robert Wright,
Ellie Dworak, Robert Perret

State Librarian -- Stephanie Bailey-White,
Nonvoting Board Member



How can
YOU



get involved with these
amazing, but different,
organizations?

How can you get involved?

I C fL We're Listening feedback,
SPLAT,
other advisory/working groups

I LA become a member!
join a working group,
join the board

Can you
stump
the state librarian?



Stephanie Bailey - White